

Service  
Service  
**Service**



# Service Manual

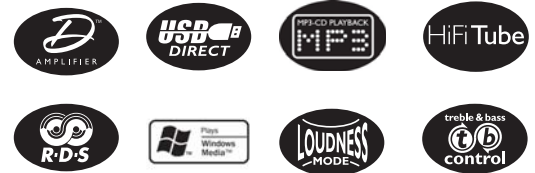


TABLE OF CONTENTS

Location of PC Boards .....	1-1	Headphone,Button&AUX Board Diagram .....	8
Specification .....	1-2	LAMP Board .....	9
Measurement Setup .....	1-3	TUNER Board .....	10
Service Aids .....	1-4	Circuit diagram .....	10-1
Instruction On CD Playability .....	1-5	Layout diagram .....	10-2
Software Version Check & Upgrade .....	2-1	Decoder Board .....	11
Malfuction Check Chart .....	2-2	Circuit diagram .....	11-1 to 11-4
Disassembly Diagram .....	3-1	Layout diagram .....	11-5 to 11-6
Block Diagram .....	4-1	Explode View .....	12-1
Wiring Diagram.....	4-2	Service Partlist .....	13-1 to 13-2
VFD Display Board .....	5	Factory Partlist .....	13-3 to 13-11
Circuit diagram .....	5-1		
Layout diagram .....	5-2		
Prepositive Board .....	6		
Circuit diagram .....	6-1		
Layout diagram .....	6-2		
AMP Board .....	7		
Circuit diagram .....	7-1		
Layout diagram .....	7-2		



© Copyright 2008 Philips Consumer Electronics B.V. Eindhoven, The Netherlands  
All rights reserved. No part of this publication may be reproduced, stored in a retrieval system or transmitted, in any form or by any means, electronic, mechanical, photocopying, or otherwise without the prior permission of Philips.

Published by DB 0831 Service Audio Printed in The Netherlands Subject to modification

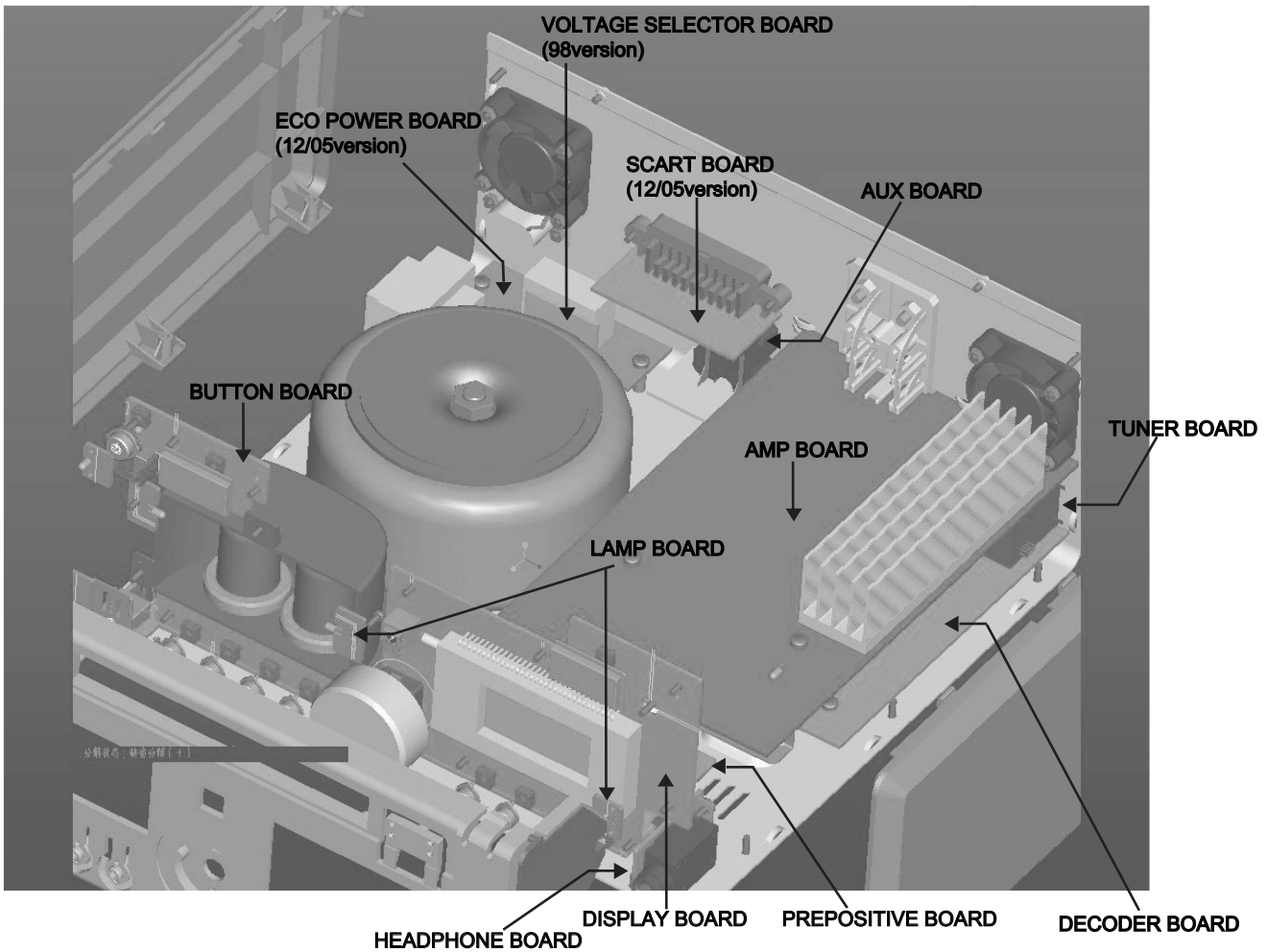
© 3141 785 33070

**Version 1.0**



**PHILIPS**

Location of PC Boards



VERSION VARIATIONS :

Type /Versions:		MCM906										
Board in used:	Service policy	/05	/12	/37	/55	/58	/61	/79	/93	/94	/96	/98
BUTTON BOARD			M									
DISPLAY BOARD			C									
AXU BOARD			M									
M-boy BOARD			M									
DECODER BOARD			M									
AMP BOARD			C									
HEADPHONE BOARD			M									
LAMP BOARD			M									
PREPOSITIVE BOARD			C									
ECO-POWER BOARD			M									
Type /Versions:		MCM906										
Features	Feature diffrence	/05	/12	/37	/55	/58	/61	/79	/93	/94	/96	/98
RDS			√									
VOLTAGE SELECTOR												
ECO STANDBY - DARK			√									
TDS												
* TIPS : C -- Component Lever Repair. M -- Module Lever Repair √ -- Used												

## Specification

### AMPLIFIER

Rated Output Power .....75W x 2 RMS  
 Signal-to-noise ratio .....  $\geq 65$  dBA  
 Frequency response ..... 40Hz + 3dB+/-3 20KHz  
 Aux Input .....0.5V RMS 47kohm

### DISC

Laser Type ..... Semiconductor  
 Disc Diameter ..... 12cm/8cm  
 Support Disc .....MP3,  
 CD-DA,CD-R,CD-RW  
 Audio DAC ..... 24Bits / 44.1kHz  
 Total Harmonic Distortion ..... <0.5%(1kHz)  
 Frequency Response .....20Hz + 0.5dB+/-2 20KHz  
 S/N Ration .....  $\geq 65$ dBA

### TUNER

FM Tuning Range ..... 87.5 – 108 MHz  
 Tuning grid .....100K/50KHz

### Sensitivity

– Mono, 50dB S/N Ratio ..... 5u V  
 – Stereo, 50dB S/N Ratio ..... 100uV  
 Selectivity ..... >33dB  
 Image Rejection ..... >25dB  
 Total Harmonic Distortion ..... <1%  
 Signal to Noise Ration ..... >65dBA

### SPEAKERS

Speaker Impedance ..... 4ohm  
 Speaker Driver, base .....5 1/4"  
 Speaker Driver, tweeter ..... $\Phi 2.5$   
 Frequency Response .....40Hz + 3dB+/-3 20KHz

### GENERAL INFORMATION

Total Output power ..... 150 W RMS  
 AC Power ..... 220-230 V / 50Hz  
 Operation Power Consumption ..... 85W  
 Standby Power Consumption ..... <4W  
 Eco Standby Power Consumption ..... <1W  
 Headphone Output ..... 2X15mW 32ohm  
 USB Direct ..... Version 1.1

### Dimensions

– Main unit (w x h x d) .....275x126x250mm  
 – Speaker box (w x h x d) .....186x300x222.5mm

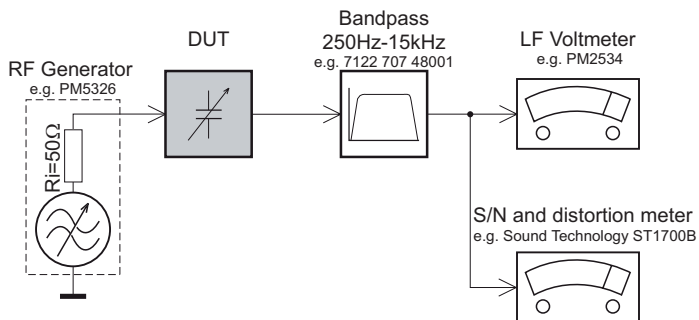
### Weight

– With Packing ..... 16.5 KG  
 – Main Unit ..... 5.0KG  
 – Speaker box ..... 4.5x2KG

Specifications and external appearance are subject to change without notice.

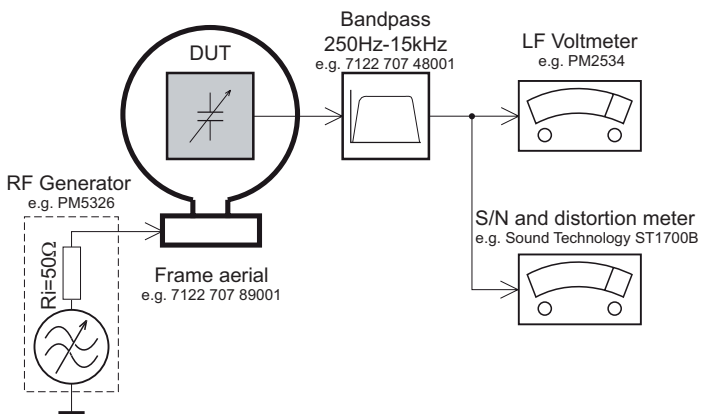
# MEASUREMENT SETUP

## Tuner FM



Use a bandpass filter to eliminate hum (50Hz, 100Hz) and disturbance from the pilotone (19kHz, 38kHz).

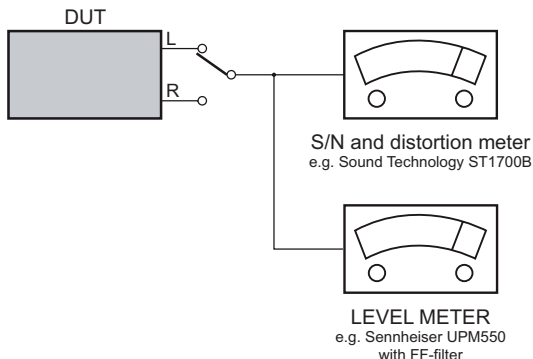
## Tuner AM (MW,LW)



To avoid atmospheric interference all AM-measurements have to be carried out in a Faraday's cage. Use a bandpass filter (or at least a high pass filter with 250Hz) to eliminate hum (50Hz, 100Hz).

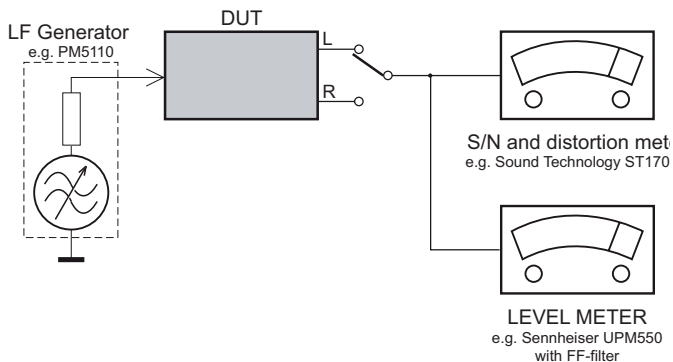
## CD

Use Audio Signal Disc SBC429 4822 397 30184 (replaces test disc 3)



## Recorder

Use Universal Test Cassette Cr02 SBC419 4822 397 30069 or Universal Test Cassette Fe SBC420 4822 397 30071



## SERVICE AIDS

### **GB** WARNING

All ICs and many other semi-conductors are susceptible to electrostatic discharges (ESD). Careless handling during repair can reduce life drastically.

When repairing, make sure that you are connected with the same potential as the mass of the set via a wrist wrap with resistance. Keep components and tools also at this potential.

### ESD



### **GB**

Safety regulations require that the set be restored to its original condition and that parts which are identical with those specified, be used

Safety components are marked by the symbol  $\Delta$ .

**CLASS 1  
LASER PRODUCT**

## INFORMATION ABOUT LEAD-FREE SOLDERING

Philips CE is producing lead-free sets from 1.1.2005 onwards.

### IDENTIFICATION:

Regardless of special logo (not always indicated) one must treat all sets from 1 Jan 2005 onwards, according next rules:



- On our website [www.atyourservice.ce.Philips.com](http://www.atyourservice.ce.Philips.com) you find more information to:
  - \* BGA-de-/soldering (+ baking instructions)
  - \* Heating-profiles of BGAs and other ICs used in Philips-sets
  - \* Lead free

You will find this and more technical information within the "magazine", chapter "workshop news".

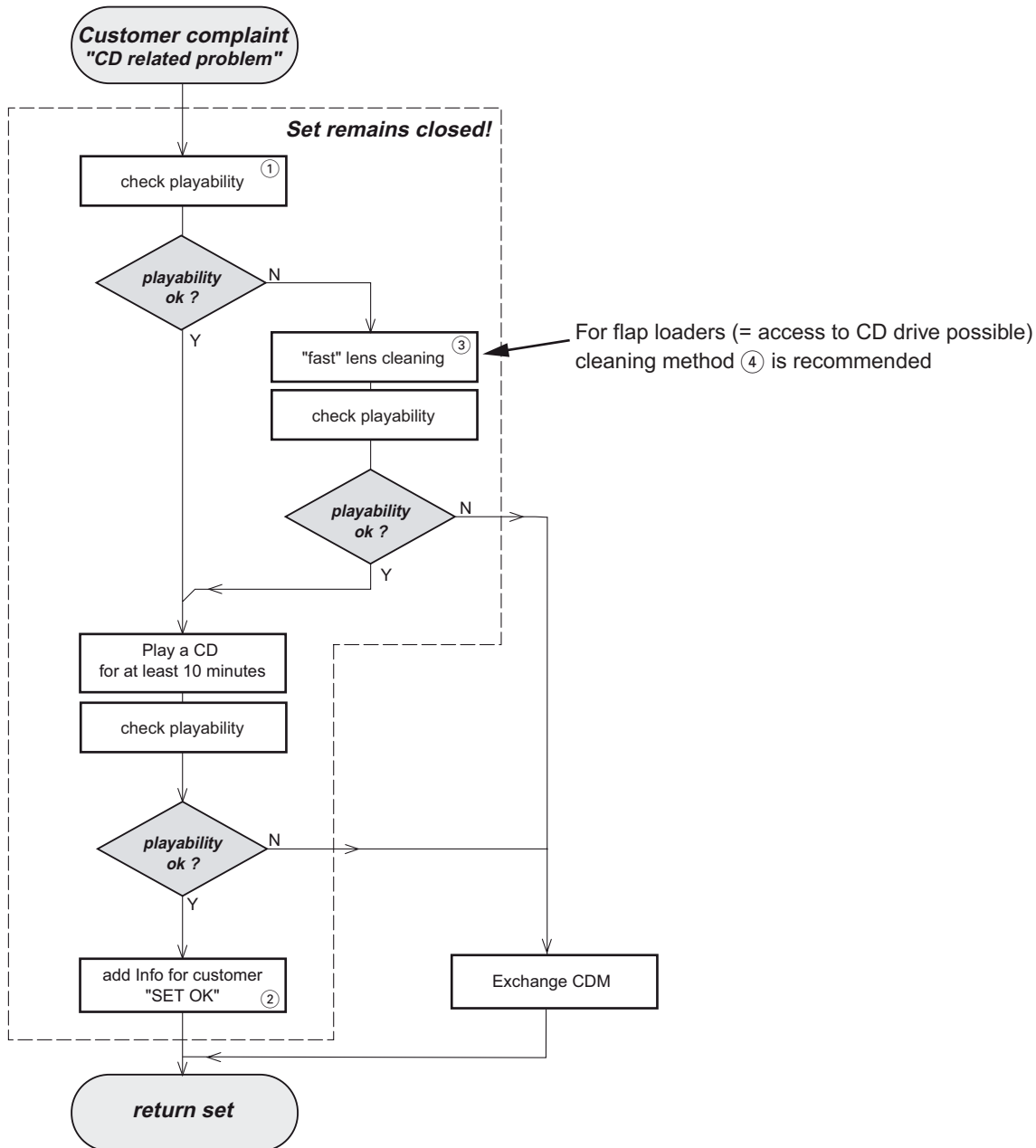
For additional questions please contact your local repair-helpdesk.

## SERVICE INSTRUCTION

Safety regulations require that after a repair, the set must be returned in its original condition. Pay in particular attention to the following points:

- Route the wire trees correctly and fix them with the mounted cable clamps.
- Check the insulation of the AC Power lead for external damage.
- Check the strain relief of the AC Power cord for proper function.
- Check the electrical DC resistance between the AC Power Plug and the secondary side (only for sets which have a AC Power isolated power supply):
  1. Unplug the AC Power cord and connect a wire between the two pins of the AC Power plug.
  2. Set the AC Power switch to the "on" position (keep the AC Power cord unplugged!).
  3. Measure the resistance value between the pins of the AC Power plug and the metal shielding of the tuner or the aerial connection on the set. The reading should be larger than 4.5 Mohm (For U.S. it should be between 4.2 Mohm and 12 Mohm).
  4. Switch "off" the set, and remove the wire between the two pins of the AC Power plug.
- Check the cabinet for defects, to avoid touching of any inner parts by the customer.

## INSTRUCTIONS ON CD PLAYABILITY



① - ④ For description - see following pages

## INSTRUCTIONS ON CD PLAYABILITY

①

### PLAYABILITY CHECK

For sets which are compatible with **CD-RW** discs  
 use CD-RW Printed Audio Disc .....7104 099 96611  
 TR 3 (Fingerprint)  
 TR 8 (600 $\mu$  Black dot) **maximum at 01:00**

- playback of these two tracks without audible disturbance  
 playing time for: Fingerprint  $\geq 10$ seconds  
 Black dot from 00:50 to 01:10
- jump forward/backward (search) within a reasonable time

For all other sets  
 use CD-DA SBC 444A .....4822 397 30245  
 TR 14 (600 $\mu$  Black dot) **maximum at 01:15**  
 TR 19 (Fingerprint)  
 TR 10 (1000 $\mu$  wedge)

- playback of all these tracks without audible disturbance  
 playing time for: 1000 $\mu$  wedge  $\geq 10$ seconds  
 Fingerprint  $\geq 10$ seconds  
 Black dot from 01:05 to 01:25
- jump forward/backward (search) within a reasonable time

②

### CUSTOMER INFORMATION

It is proposed to add an addendum sheet to the set which informs the customer that the set has been checked carefully - but no fault was found.

The problem was obviously caused by a scratched, dirty or copy-protected CD. In case problems remain, the customer is requested to contact the workshop directly.

The lens cleaning (method ③) should be mentioned in the addendum sheet.

The final wording in national language as well as the printing is under responsibility of the Regional Service Organizations.

④

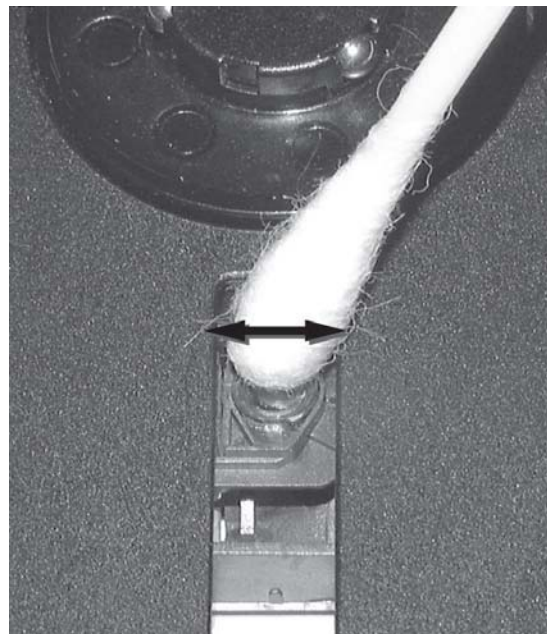
### LIQUID LENS CLEANING

**Before touching the lens it is advised to clean the surface of the lens by blowing clean air over it. This to avoid that little particles make scratches on the lens.**

Because the material of the lens is synthetic and coated with a special anti-reflectivity layer, cleaning must be done with a non-aggressive cleaning fluid. It is advised to use "Cleaning Solvent

The actuator is a very precise mechanical component and may not be damaged in order to guarantee its full function. Clean the lens gently (don't press too hard) with a soft and clean cotton bud moistened with the special lens cleaner.

The direction of cleaning must be in the way as indicated in the picture below.



## Software Version Check & Upgrade

### Upgrade software

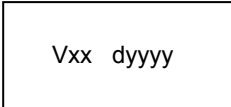
---

1. Downloading the software from Philips support website  
<http://www.philips.com/support>
2. Put in the Software CD Disc or USB, when it is loading  
Waiting a minute, till hear a long ding voice. Software  
upgrade finish.

### Software check

---

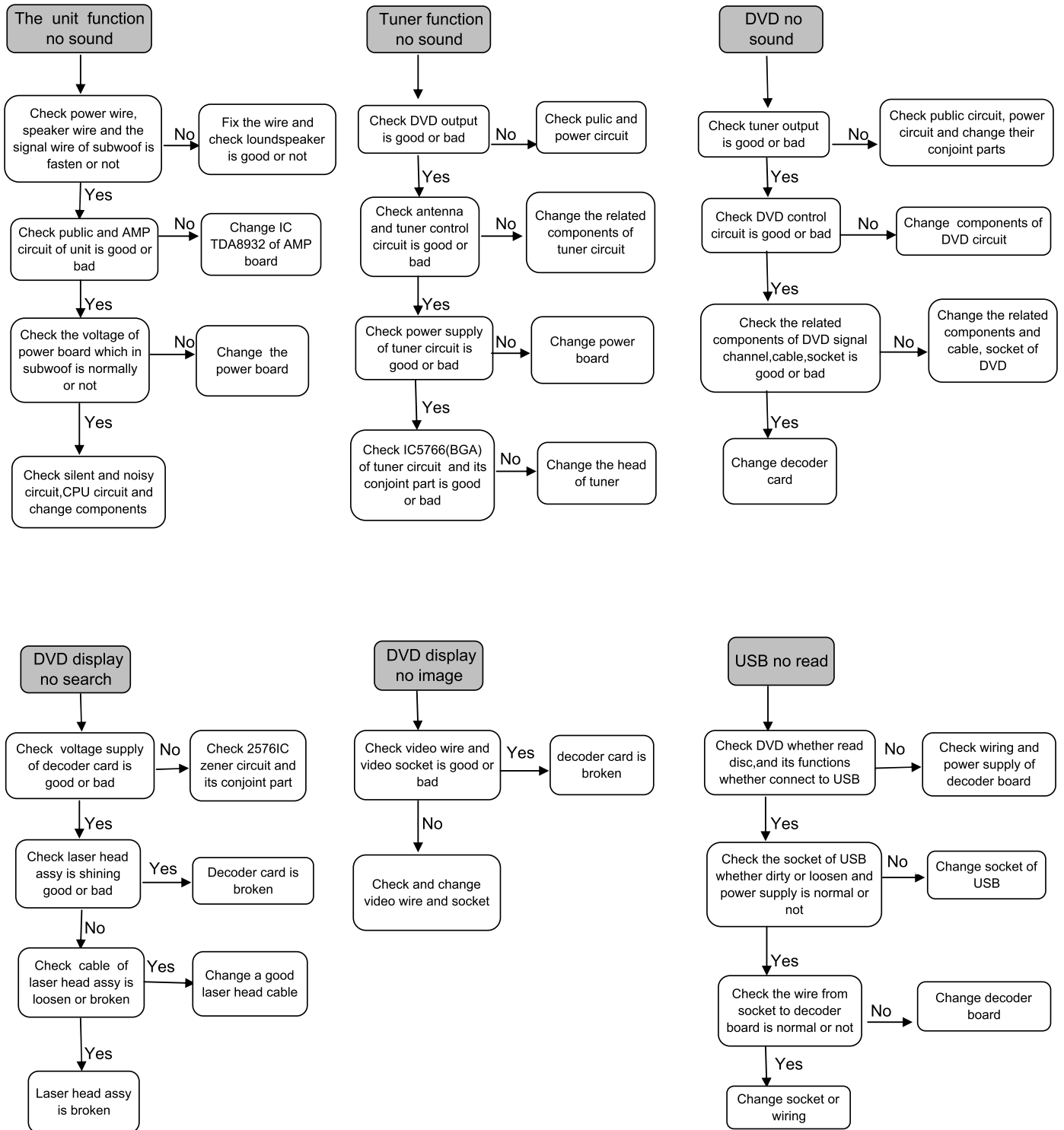
Press the "display" button quartic continuously on remote control,  
display showing as below:



Vxx dyyyy

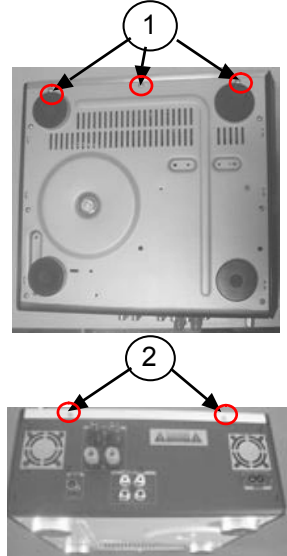


Malfunction follow check chart

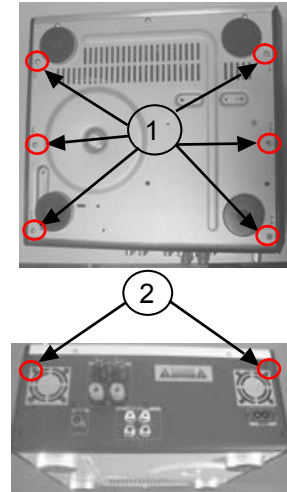


# Disassembly Diagram

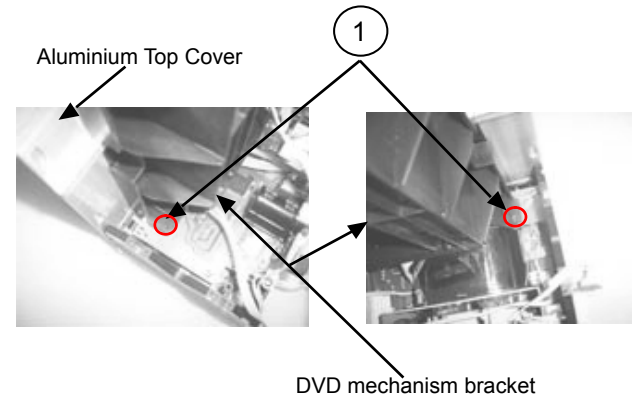
A, Loosen screws as below sketch map to open the top cabinet:  
1, screws: 3x6BMTT(3PCS)  
2, screws: 3x6FMTT(2PCS)



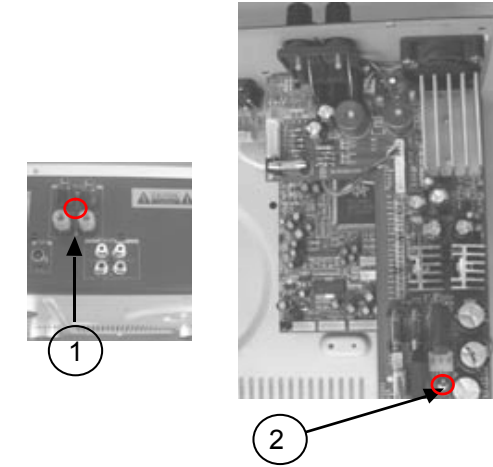
B, Loosen screws as below sketch map to remove the both sides panels:  
1, screws: 3x6PA(6PCS)  
2, screws: 3x10PA(2PCS)



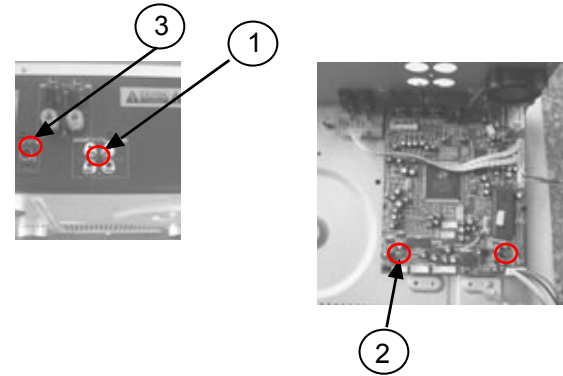
C, Loosen screws as below sketch map to remove the DVD mechanism bracket:  
1, screws: 3x12BA(2PCS)  
2, after loosed the screws, push the DVD mechanism bracket breadthwise to remove it



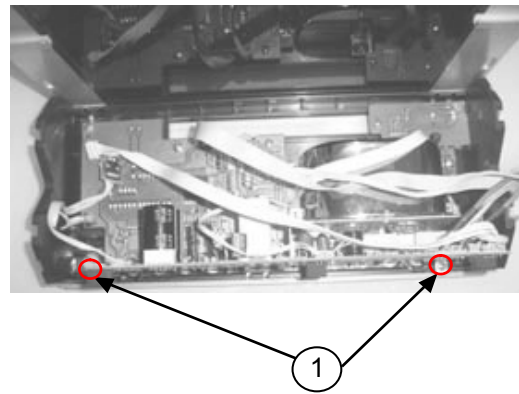
D, Loosen screws as below sketch map to remove AMP board:  
1, screws: 3x10PA(1PC)  
2, screws: 3x10PA(4PCS)



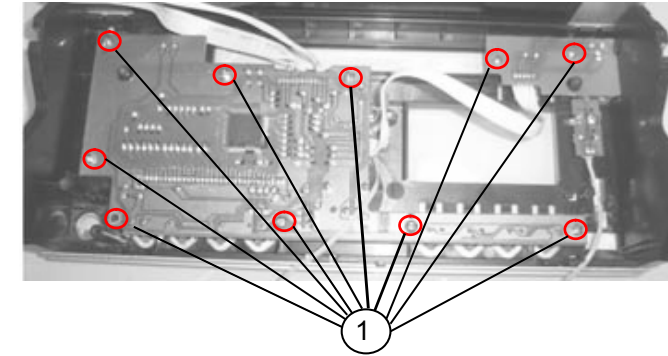
E, Loosen screws as below sketch map to remove the Decoder Board:  
1, screws: 3x10PA(1PCS)  
2, screws: 3x6BM(2PCS)  
3, screws: 3x6PMTT(1pc)



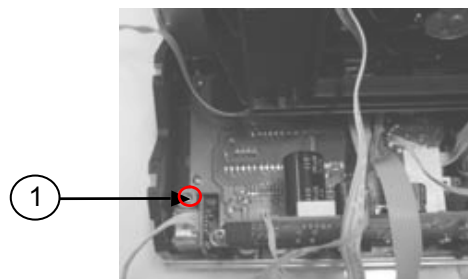
F, Loosen screws as below sketch map to remove the Prepositive Board:  
1, screws: 3x6PA(2PCS)



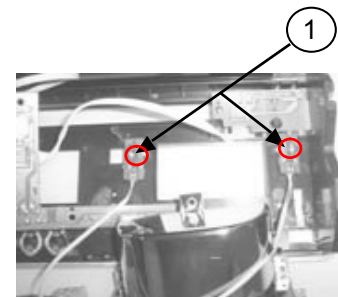
G, Loosen screws as below sketch map to remove the Display Board:  
1, screws: 2.6x6BB(10PCS)



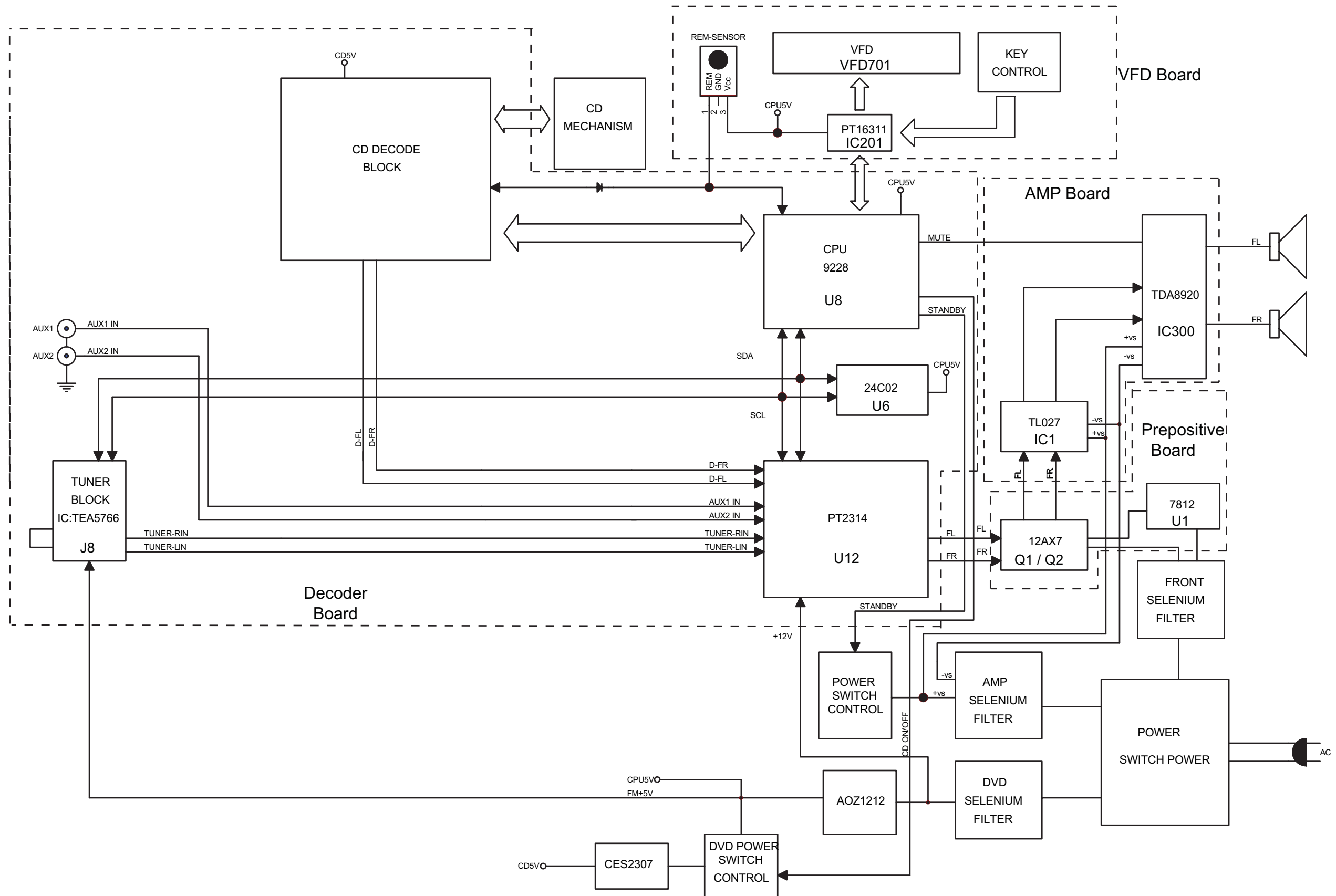
H, Loosen screws as below sketch map to remove the USB Board:  
1, screws: 3x6PA(1PC)



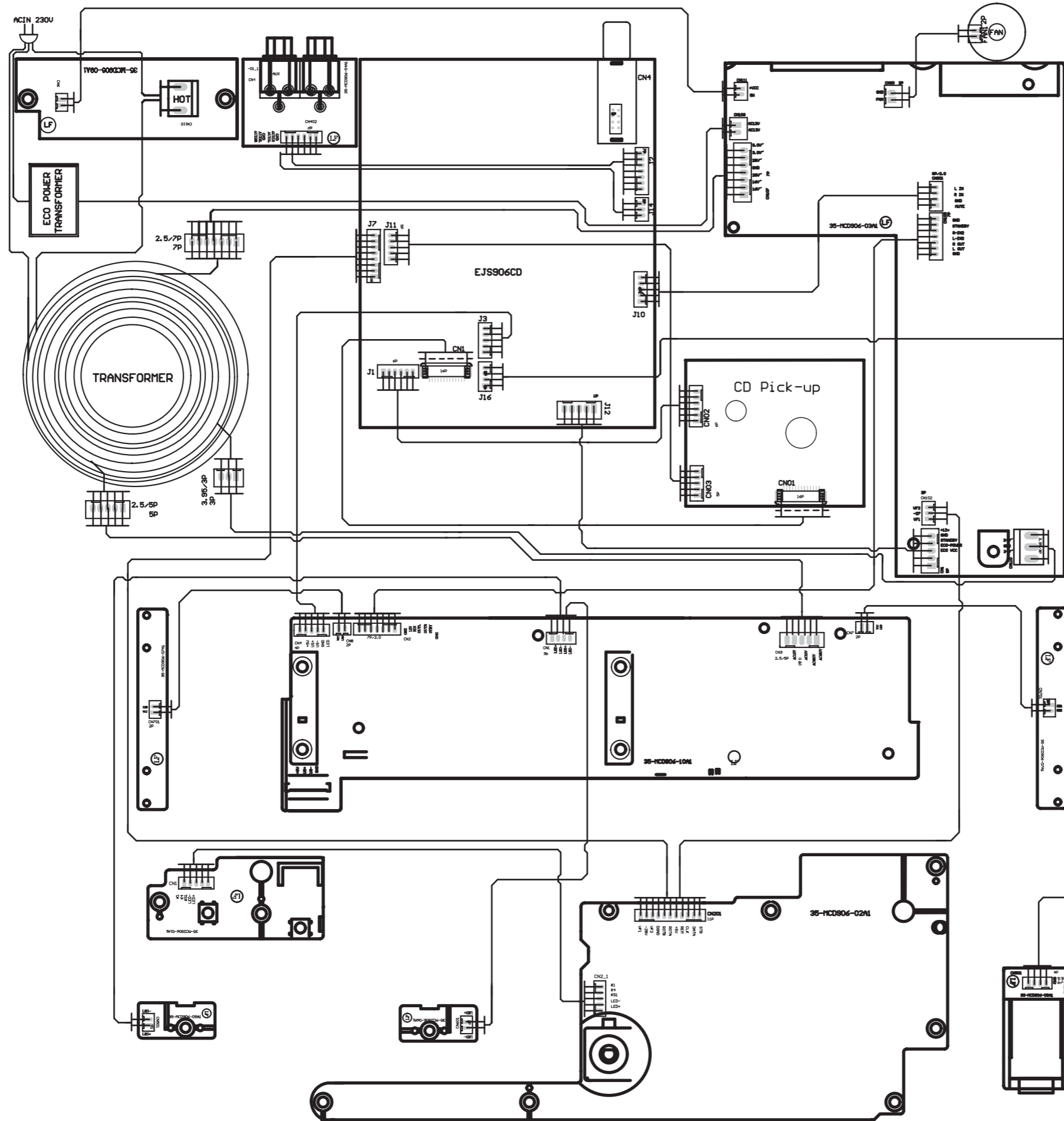
I, Loosen screws as below sketch map to remove the LAMP Board:  
1, screws: 2.6x4BB(2PCS)



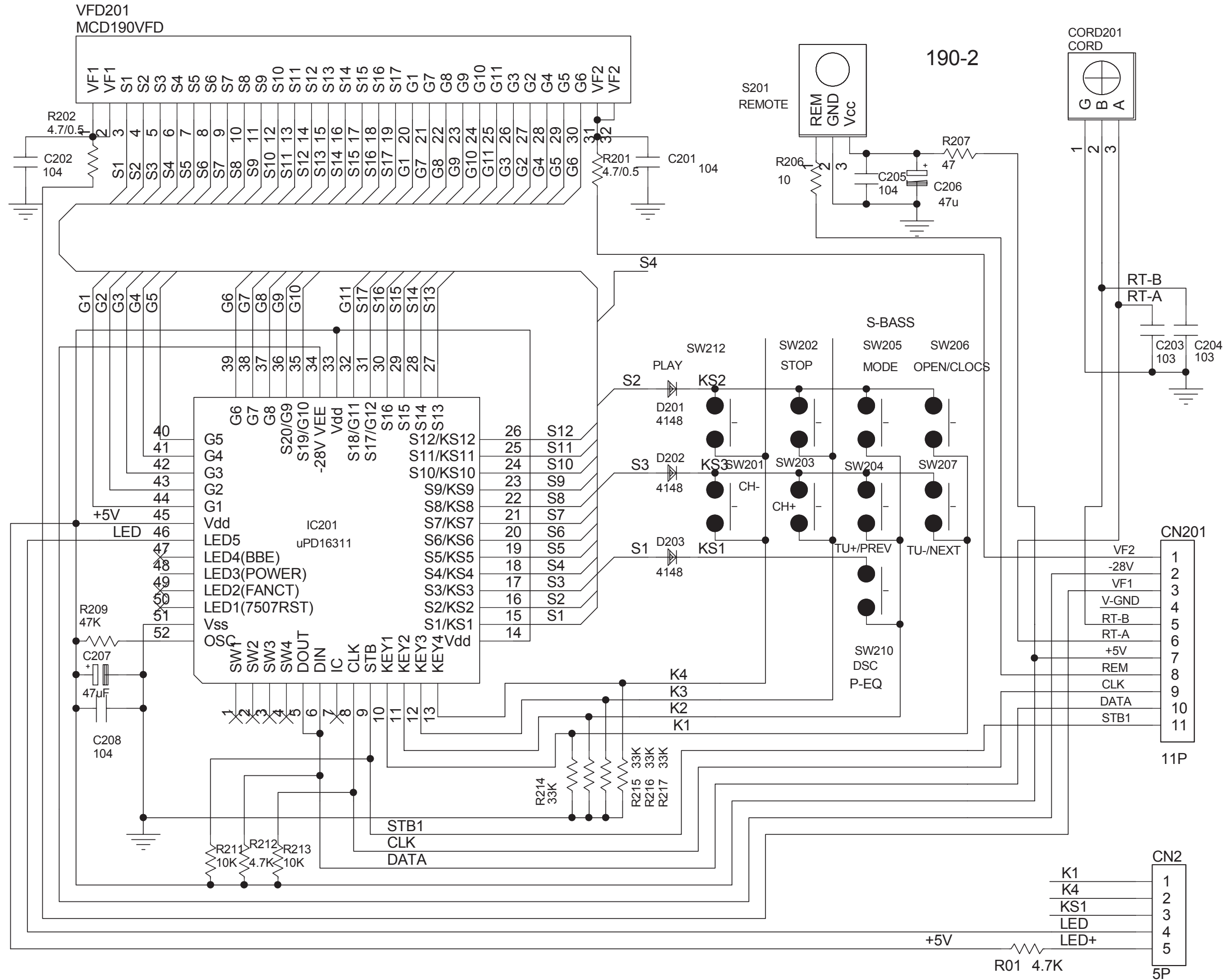
# Block Diagram



# Wiring Diagram

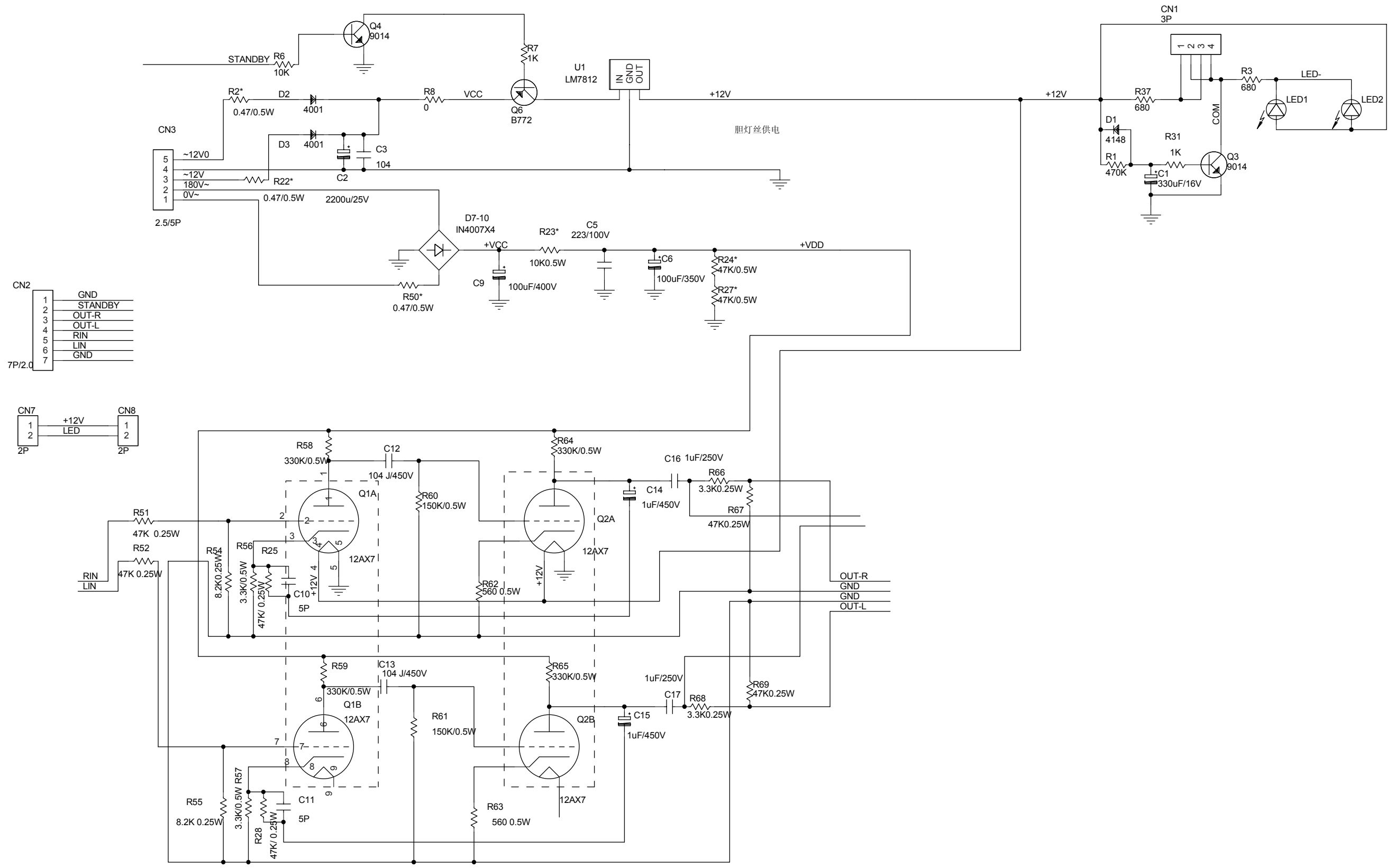


# VFD Display Board --Circuit Diagram

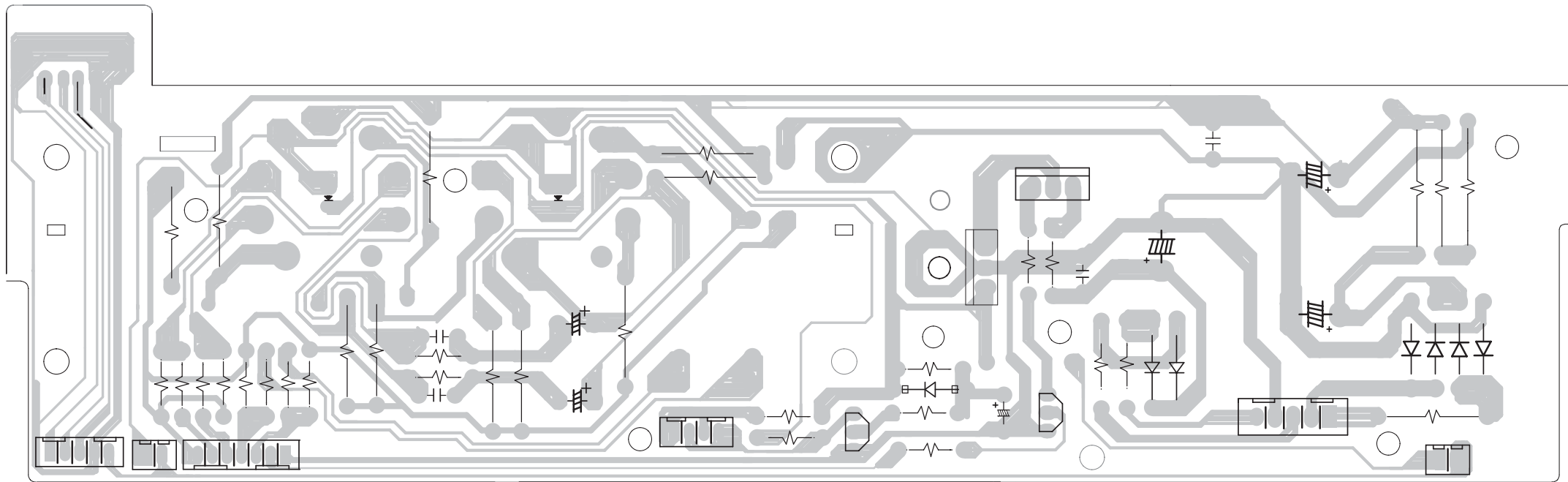
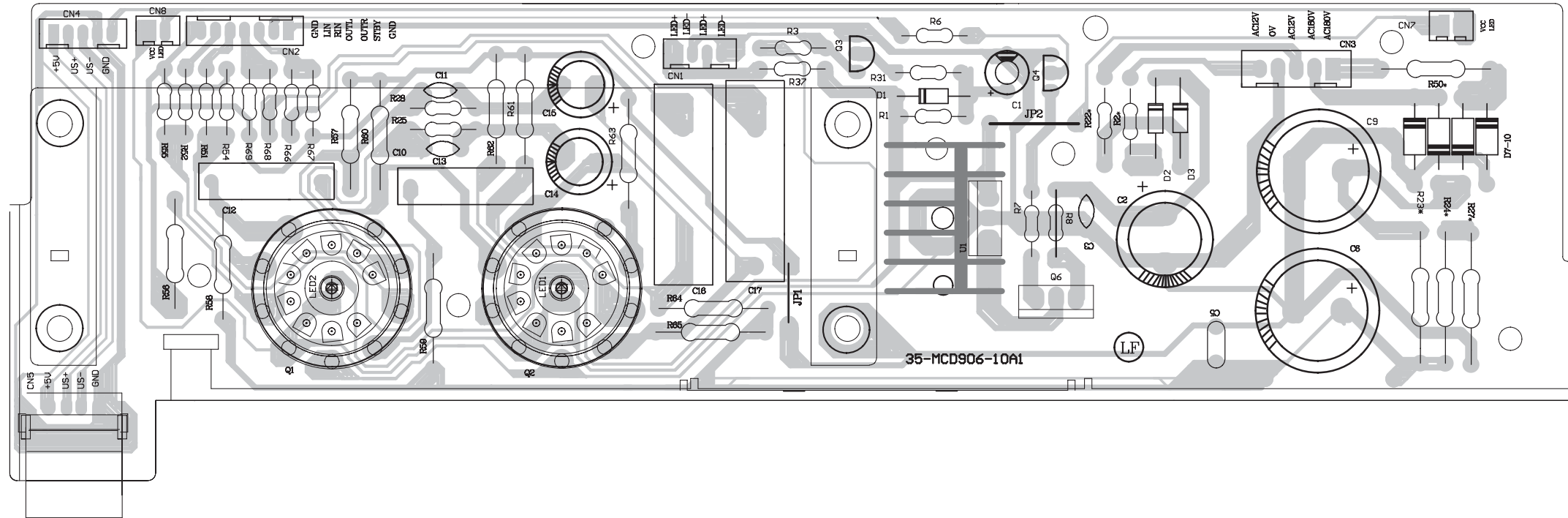




# Prepositive Board -- Circuit Diagram

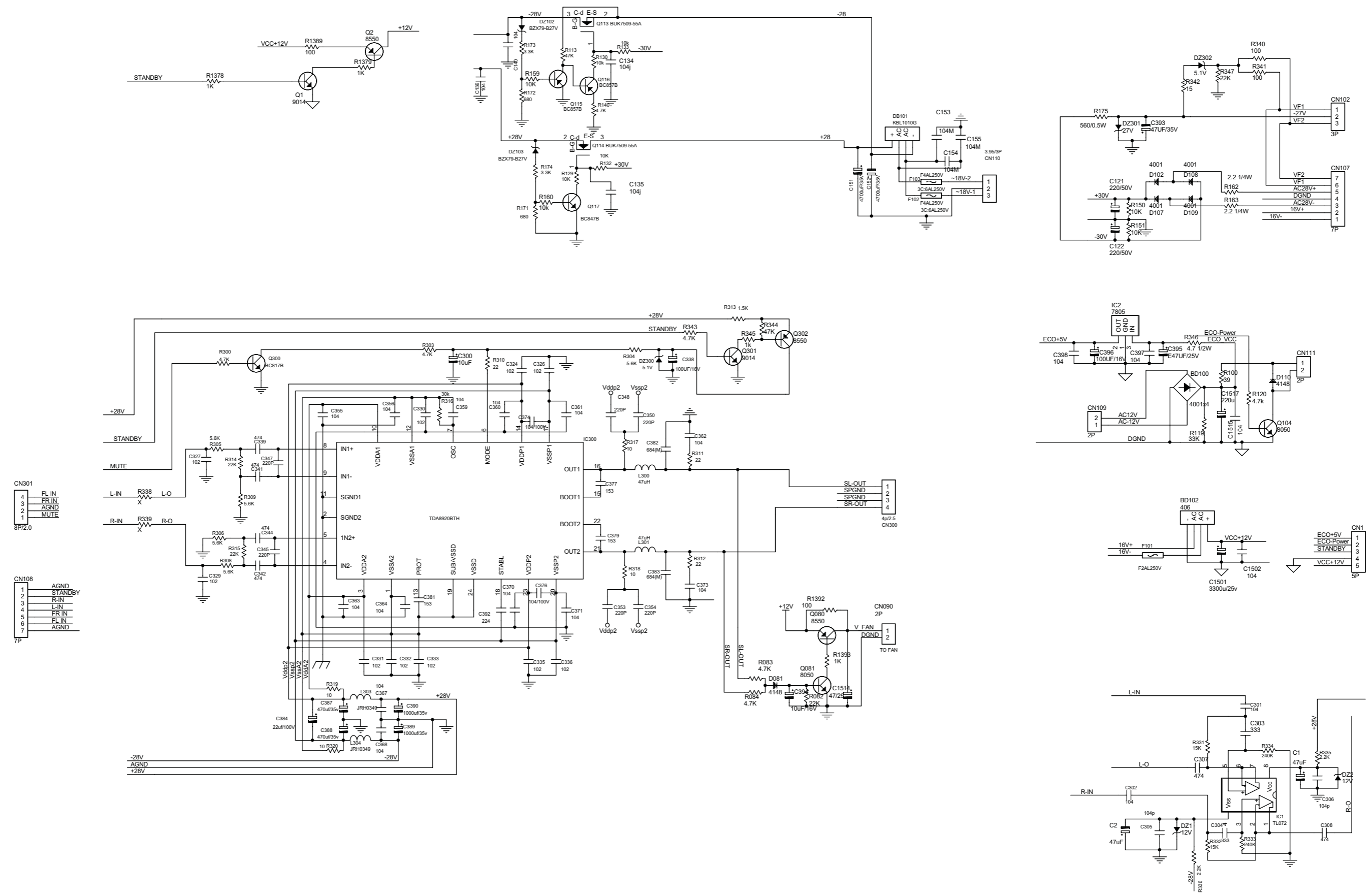


Prepositive Board--Layout Diagram





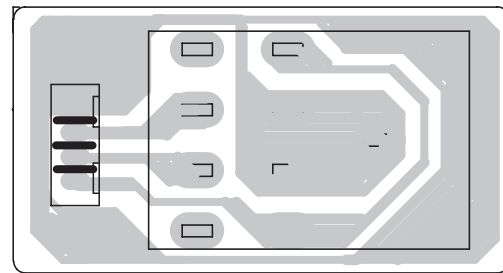
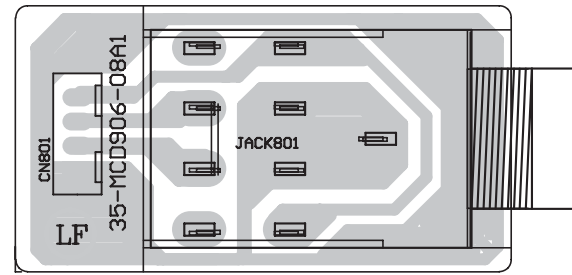
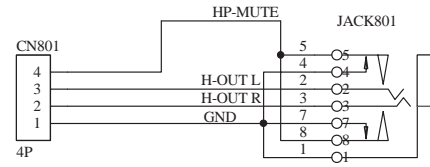
# AMP Board --Circuit Diagram



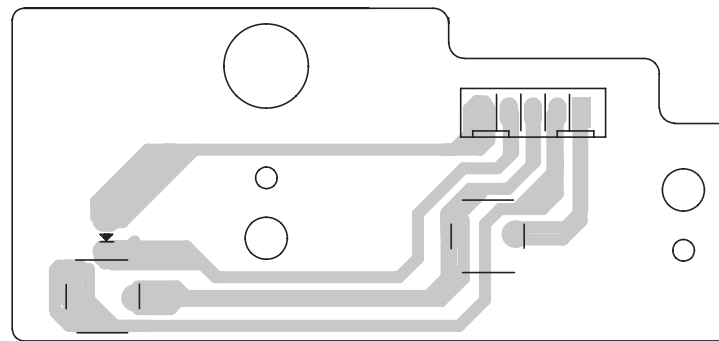
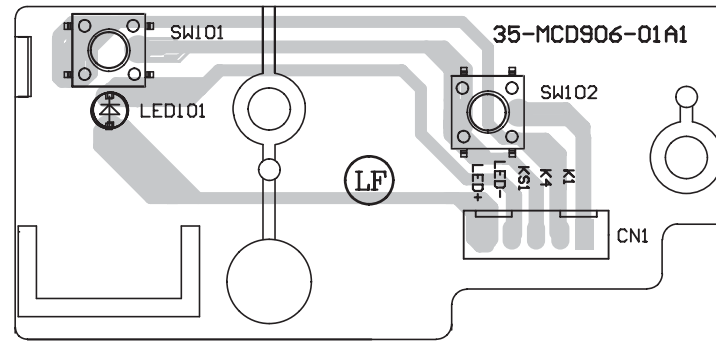
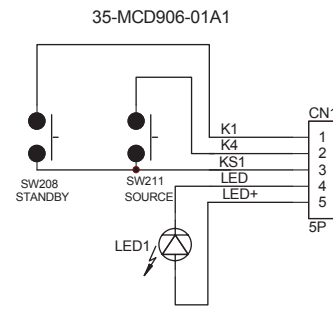


# Headphone, Button & AUX Board Diagram

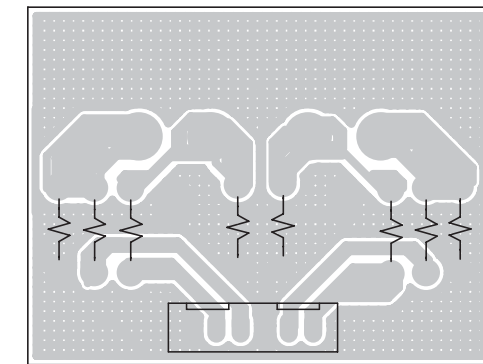
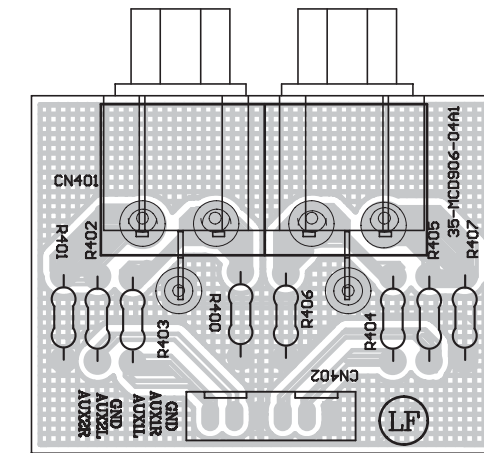
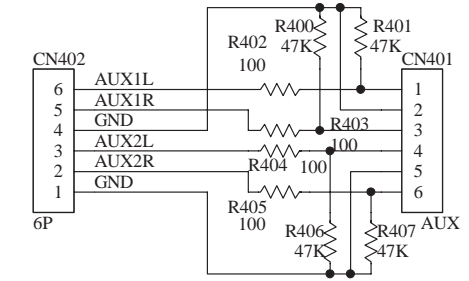
## Headphone Board



## Button Board

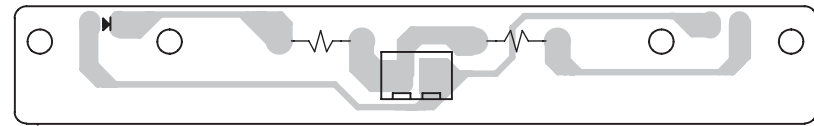
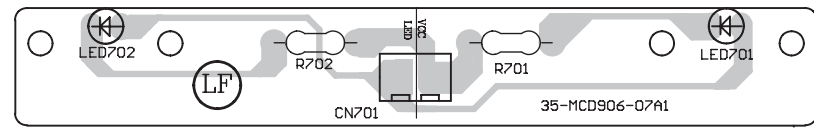
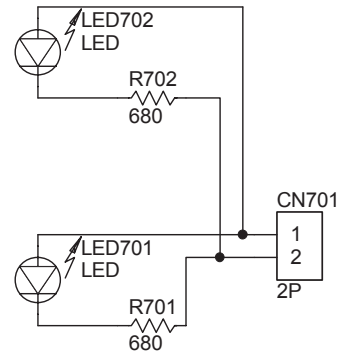


## AUX Board

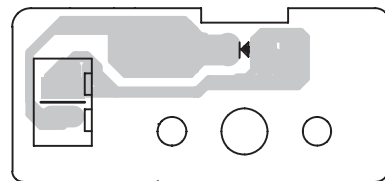
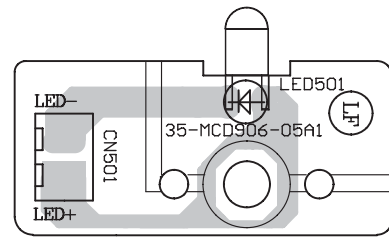
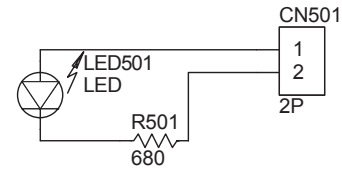


# Lamp Board Diagram

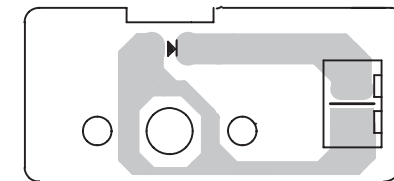
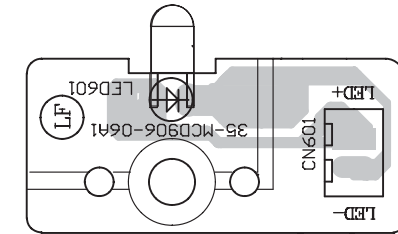
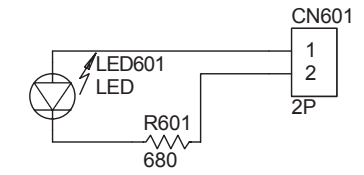
### LAMP BOARD



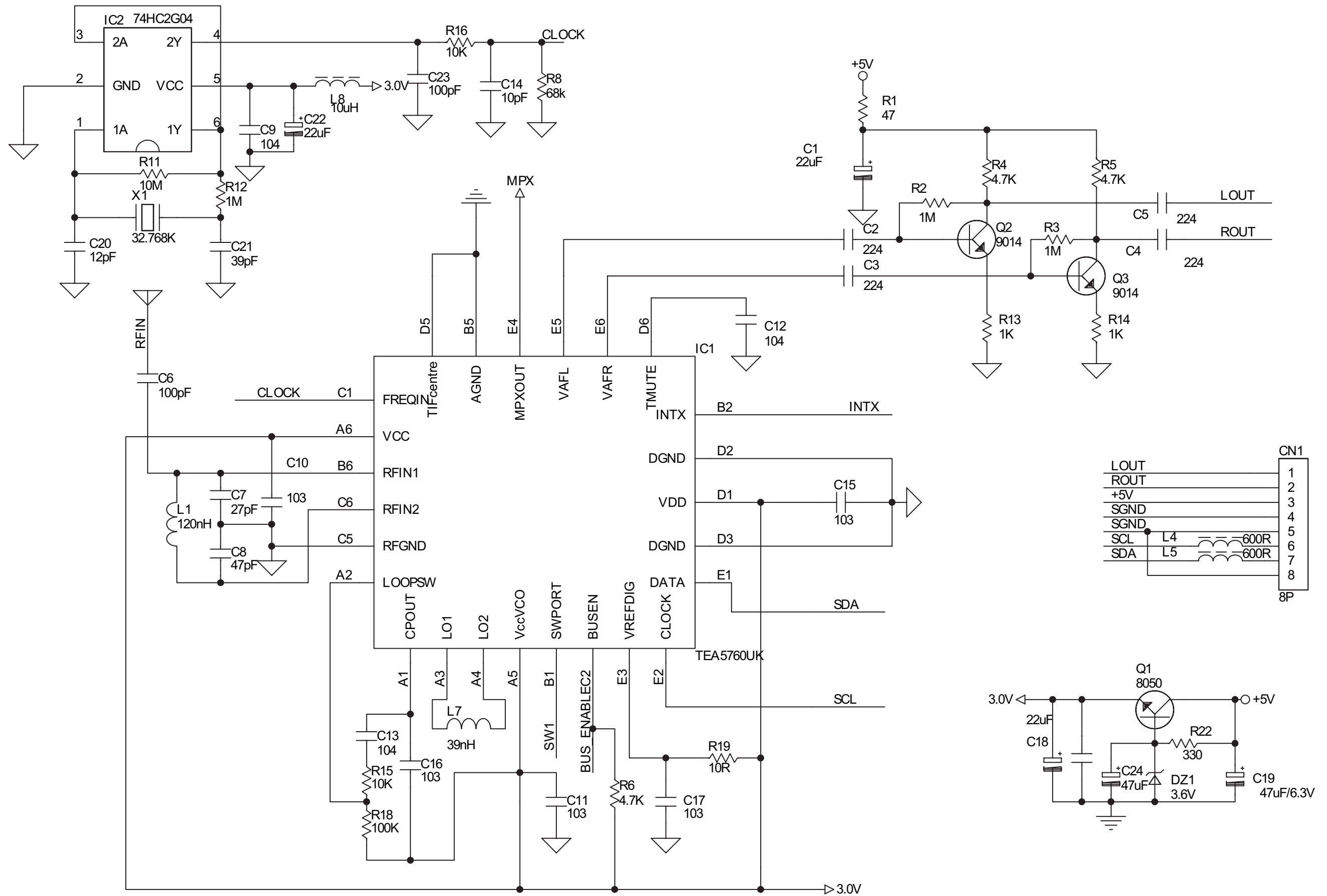
### VALVE LAMP BOARD-L



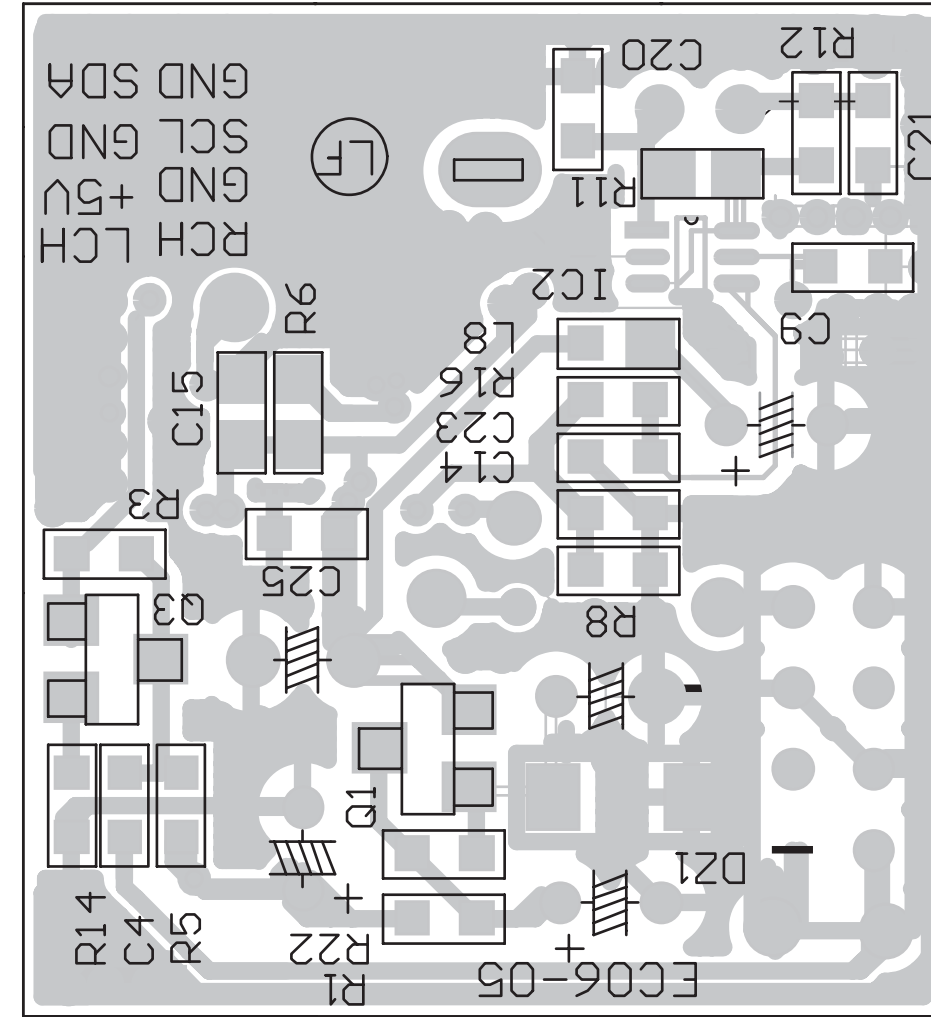
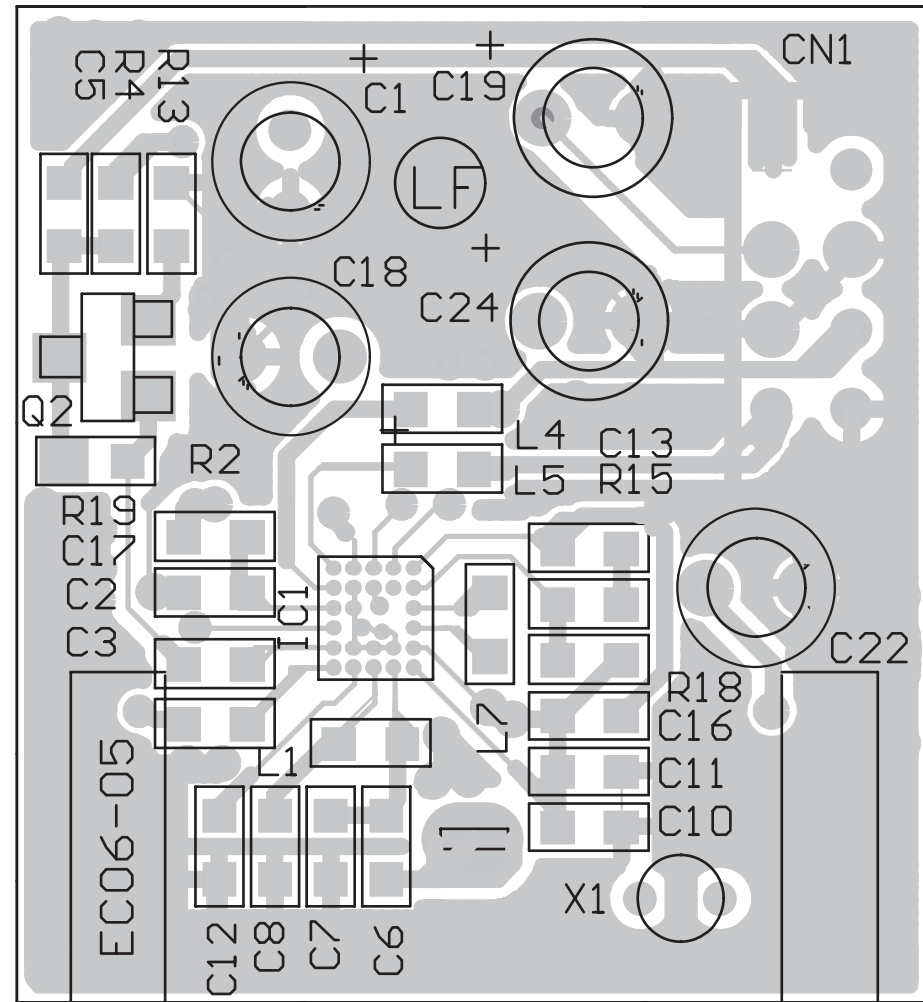
### VALVE LAMP BOARD-R



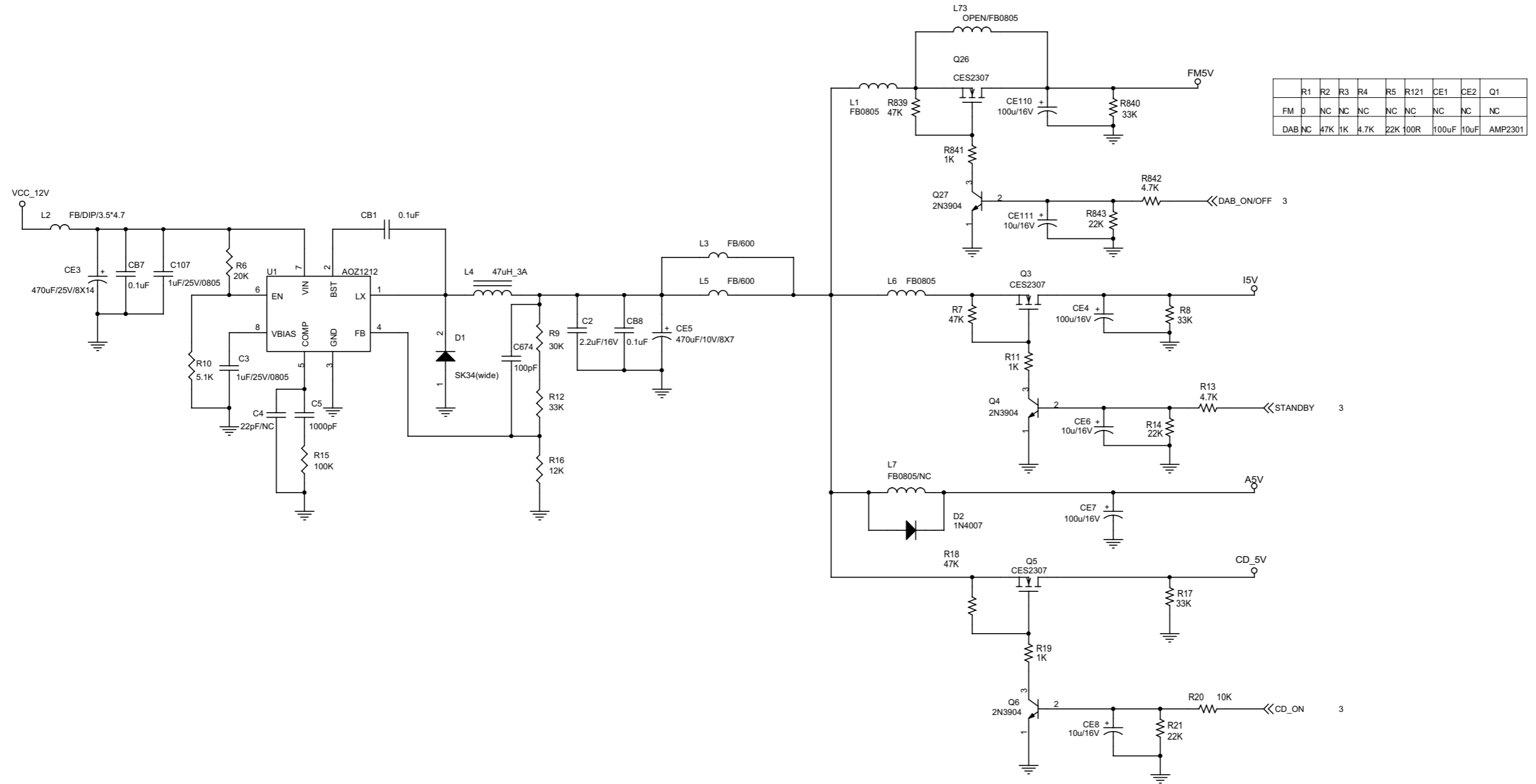
# Tuner Board-Circuit Diagram



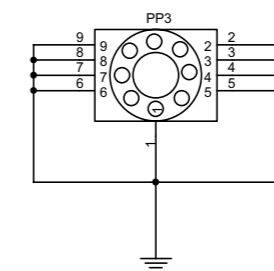
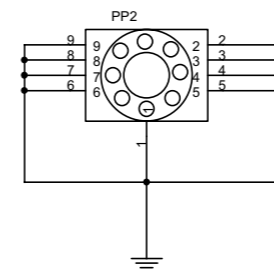
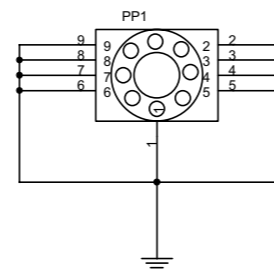
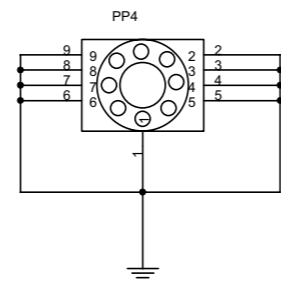
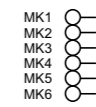
Tuner Board-Layout Diagram



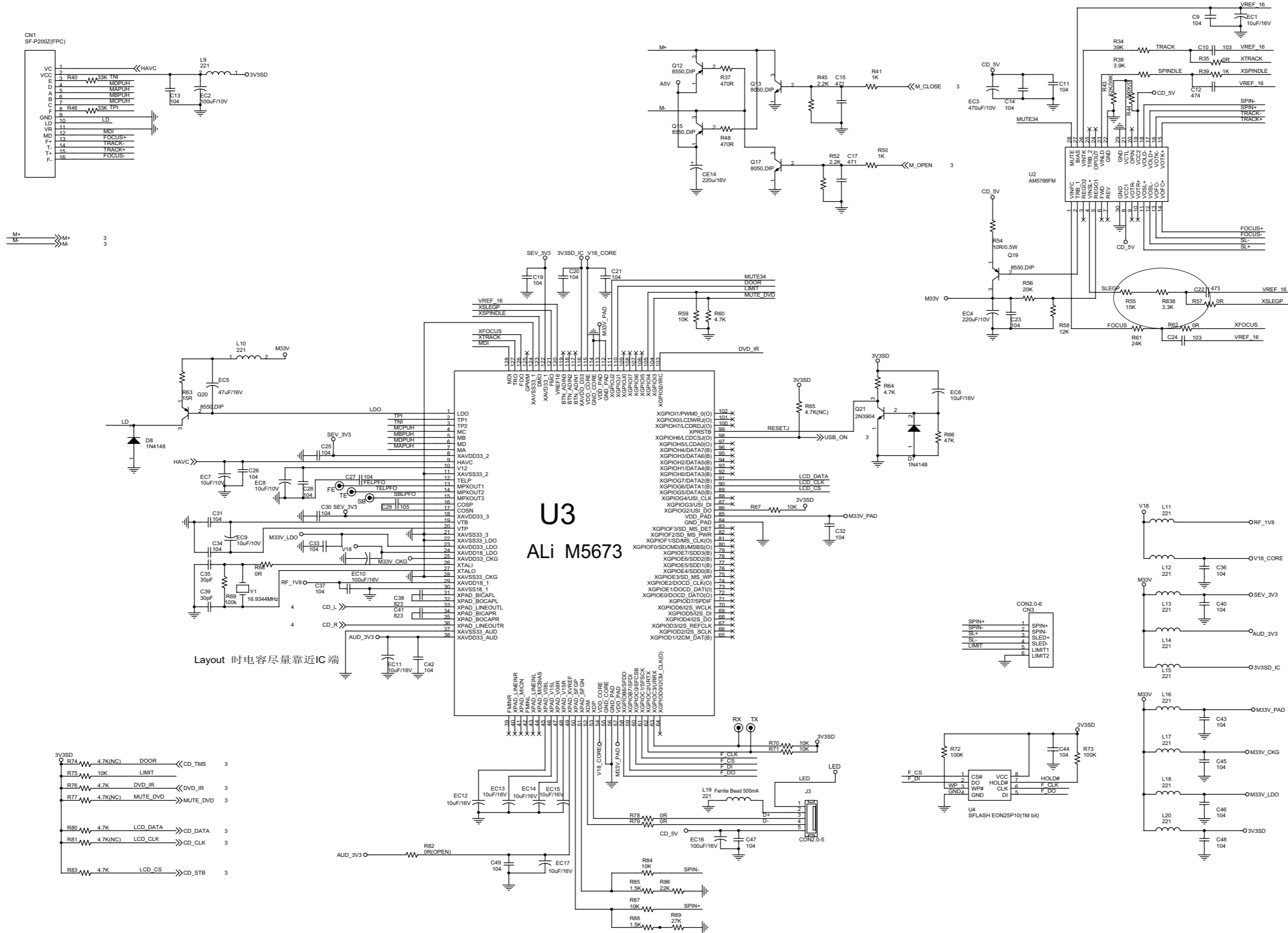
Decoder Board--Circuit Diagram



	R1	R2	R3	R4	R5	R121	CE1	CE2	Q1
FM	0	NC	NC	NC	NC	NC	NC	NC	NC
DAB	NC	47K	1K	4.7K	22K	100R	100uF	10uF	AMP2301

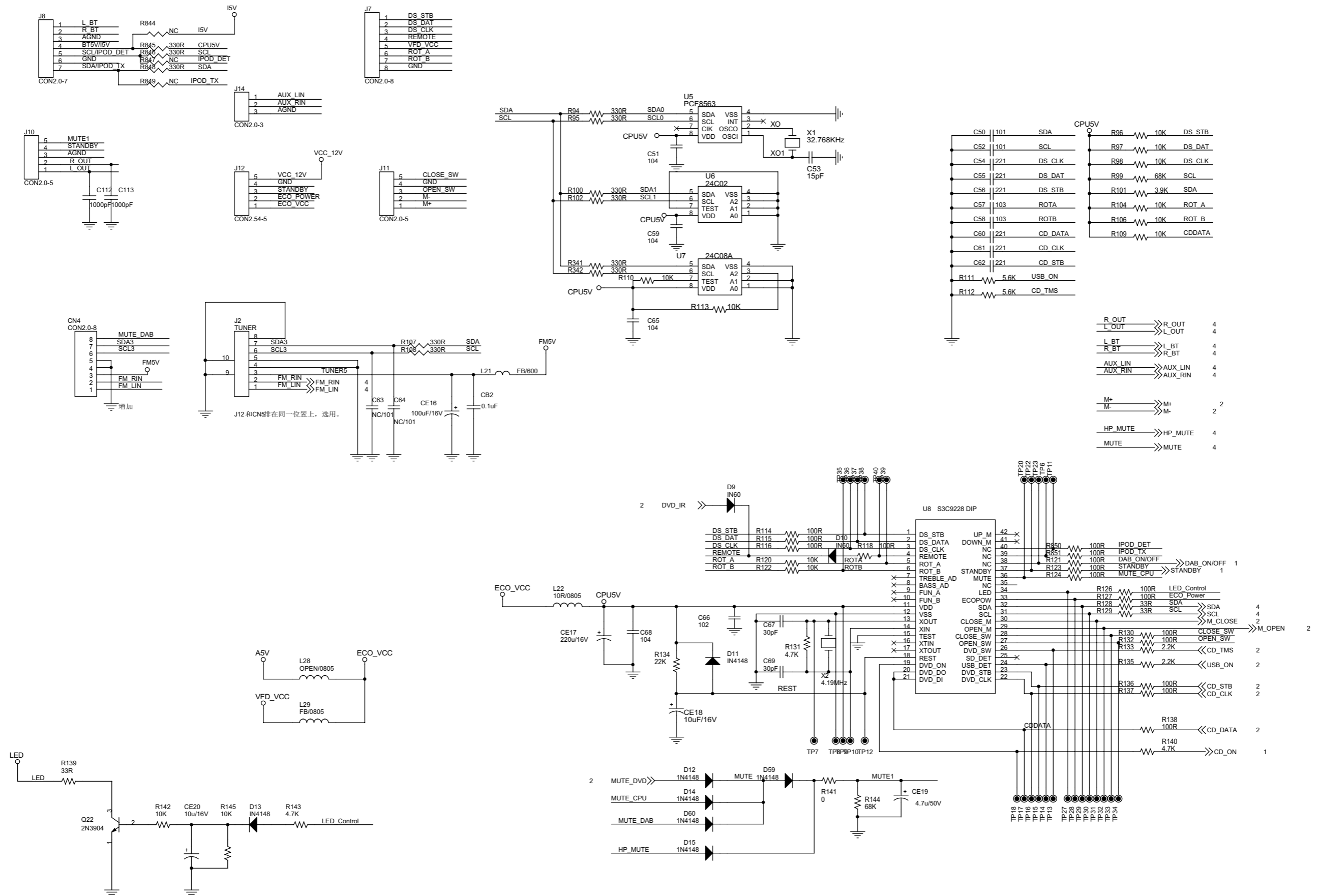


# Decoder Board--Circuit Diagram

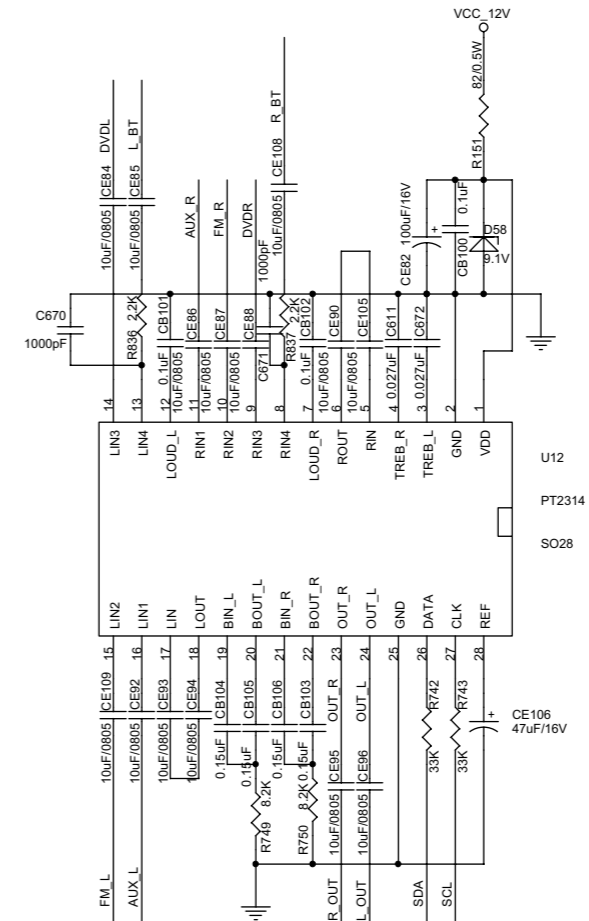
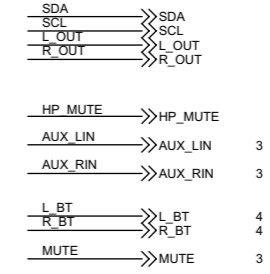
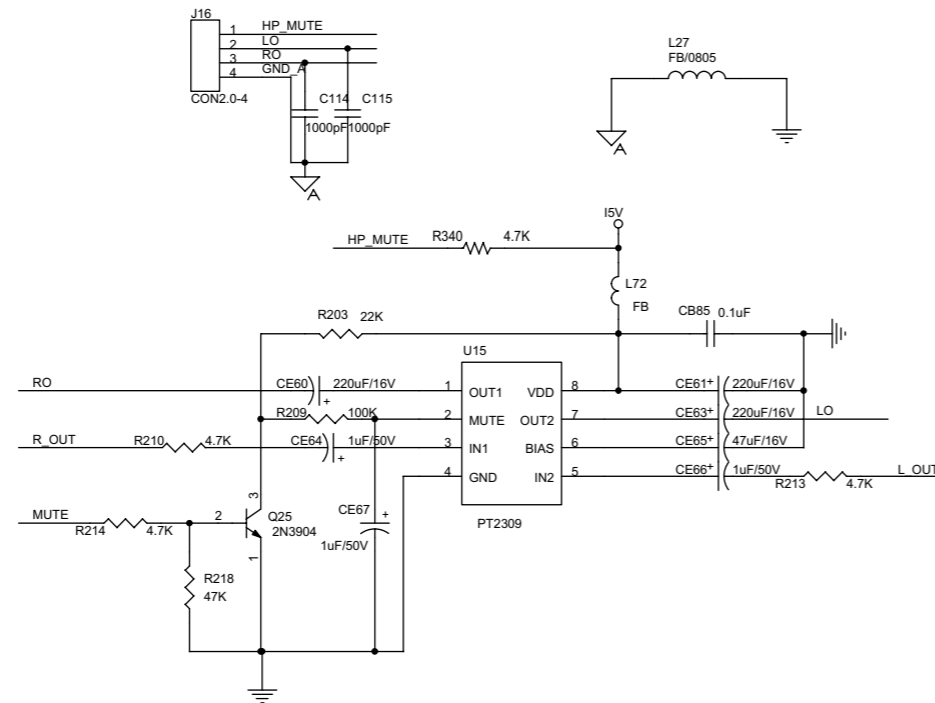
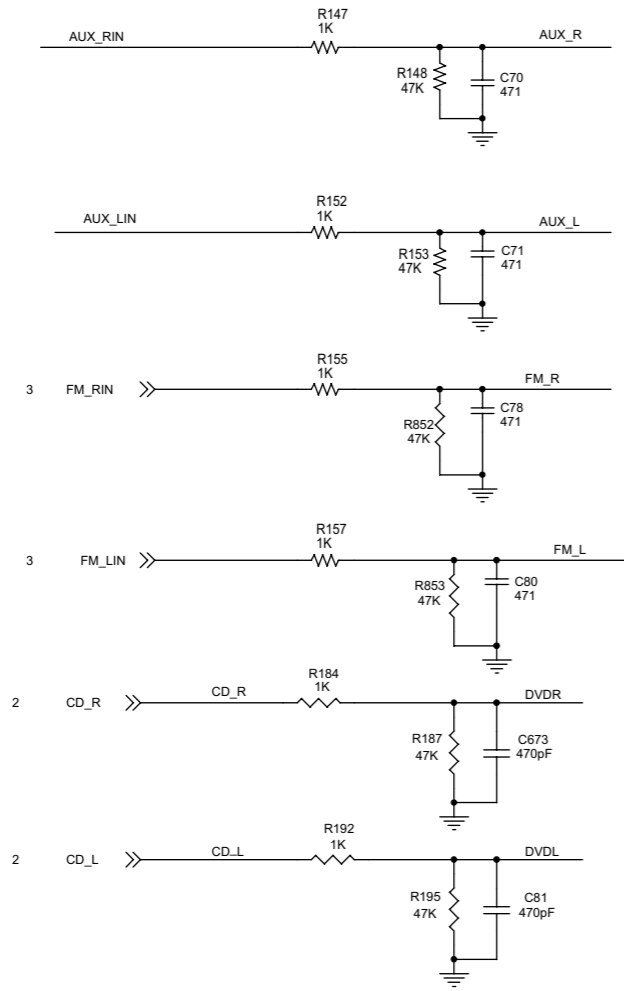




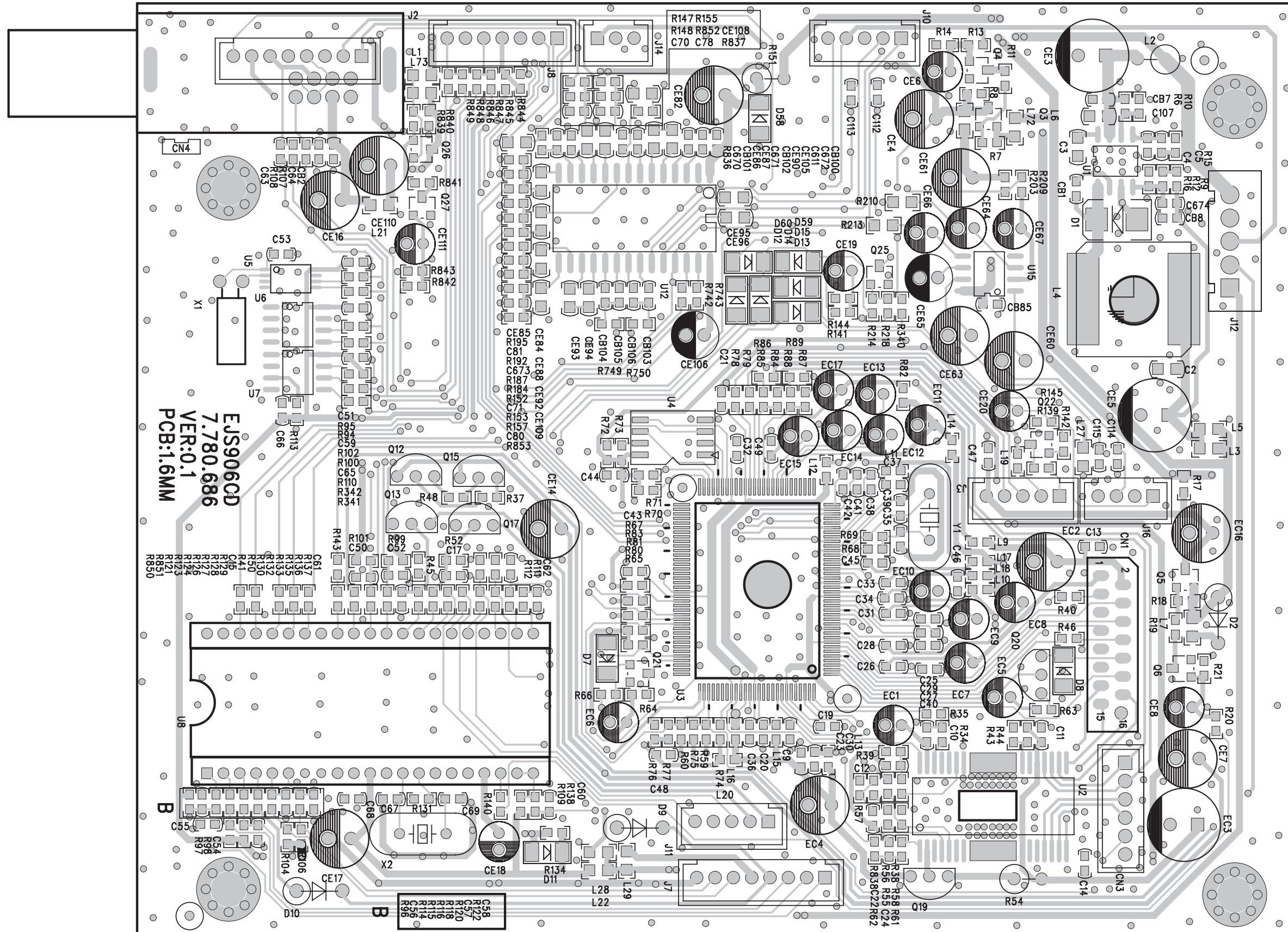
# Decoder Board--Circuit Diagram



Decoder Board--Circuit Diagram



Decoder Board--Layout Diagram--TOP







**ACCESSORIES PARTS LIST**

2A	996510018715	MCM906/12 SPEAKER BOX ASSY(L)
2B	996510018716	MCM906/12 SPEAKER BOX ASSY(R)
2C	996500041018	FM ANTENNA WIRE 1.5m
2D	994000004988	AC LINE CORD 1.8M
2F	996510018717	MCM906REMOTE CONTROL RC2144101

**MECHANICAL&MISCELLANEOUS PARTS**

D001	996510018712	MCD906 TOP LENS ABS718
D003	996510017923	MCD906 PLASTIC SIDE PLATE(L)
D004	996510017927	MCD906 DISPLAY LENS(PMMA)
D005	996510017925	MCD906 LIGHT GUIDE-L
D006	996510017926	MCD906 LIGHT GUIDE-R
D007	996510017915	MCD906 FRONT CABINET PARTS
D008	996510017916	MCD906 POWER BUTTON PARTS
D009	996510017920	MCD906 USB DOOR(HIPS)
D010	996510017918	MCD906 VOLUME KNOB PARTS
D028	996510018714	i TRANSFORMER 906D-12 230V/VDE
D031	994000005165	AC SOCKET 1A/250V
D032	996510018713	i TRANSFORMER228A-12 230V/50CE
D036	996510007807	MINI FAN RDM4010S DC12V/0.7A
D040	996510017924	MCD906 PLASTIC SIDE PLATE-R
D044	996510017921	MCD906 DVD MECHANISM BRACKET
D047	996510017917	MCD906 DOOR PARTS
D049	996520033990	RUBBER PAD
D007B	996510017910	MCD906 LAMP BOARD ASSY
D012	996510017909	MCD906VALVE LAMP BOARD ASSY-L
D013	996510017908	MCD906VALVE LAMP BOARD ASSY-R
D020	996510018705	MCM906 BUTTON BOARD ASSY
D026	996510017911	MCD906 HEADPHONE BOARD ASSY
D033	996510018708	MCM906 ECO POWER CONTROL BOARD
D034	996510018641	MCM770/772/906 M-BOY BOARD
D035	996510017907	MCD906 AUX BOARD ASSY
D039	996510018711	MCM906/12 DECODER+MCU PARTS
D045	996510021096	DA11VF/WXD-8210D CD MECHANISM

**ELECTRICAL PARTS - PREPOSITIVE BOARD**

C12	996510001150	MYLAR CAPACITOR 104P 280V K
C13	996510001150	MYLAR CAPACITOR 104P 280V K
C14	996510001152	ELE.CAPACITOR 1U 450V L-5
C15	996510001152	ELE.CAPACITOR 1U 450V L-5
C16	996510001151	METALLIZED CAP. 1u 250V
C17	996510001151	METALLIZED CAP. 1u 250V
C5	996510001153	CERAMIC CAPACITOR 223P 1000V L
C6	996510001149	ELECTROLYTIC CAP. 100U 350V
C9	996510001149	ELECTROLYTIC CAP. 100U 350V
CN5	994000004968	USB JACK A-TYPE 4P FEMALE
D022	996520034965	MCD906 VAC. TUBE BACK PANEL
Q1	996500042557	SOCKET GZC9-B(PCB)
Q1	996510001121	MOSFET 12AX7
Q2	996500042557	SOCKET GZC9-B(PCB)
Q2	996510001121	MOSFET 12AX7

**ELECTRICAL PARTS - PREPOSITIVE BOARD**

Q3	996500042559	TRANSISTOR 9014D-5
Q4	996500042559	TRANSISTOR 9014D-5
Q6	994000004938	TRANSISTOR 2SB772A
U1	996500042020	IC 7812

**ELECTRICAL PARTS - DISPLAY BOARD**

CORD201	996510018706	CODER R166ECC-D1-15F-24P-I066
IC201	996510000500	IC PT6311/SC16311/CD16311
S201	994000004961	IR SENSOR BLACK
S201	996520034964	MCD906 IR BRACKET HIPS
SW201	996520033923	TACT SWITCH TS-1307-01 6X6X5
SW202	996520033923	TACT SWITCH TS-1307-01 6X6X5
SW203	996520033923	TACT SWITCH TS-1307-01 6X6X5
SW204	996520033923	TACT SWITCH TS-1307-01 6X6X5
SW205	996520033923	TACT SWITCH TS-1307-01 6X6X5
SW206	996520033923	TACT SWITCH TS-1307-01 6X6X5
SW207	996520033923	TACT SWITCH TS-1307-01 6X6X5
SW210	996520033923	TACT SWITCH TS-1307-01 6X6X5
SW212	996520033923	TACT SWITCH TS-1307-01 6X6X5
VFD701	996510020157	NE-906D-1.GB VFD DISPLAY

**ELECTRICAL PARTS - AMP BOARD**

CN300	996510018707	SPEAKER SOCKET 4PINS PST-410A
DZ1	994000005488	ZENER DIODE 12V 0.5W-52
DZ102	996510010895	ZENER DIODE
DZ103	996510010895	ZENER DIODE
DZ2	994000005488	ZENER DIODE 12V 0.5W-52
DZ300	996510005833	ZENER DIODE 5.1V 1/2W-52
DZ301	996510010895	ZENER DIODE
DZ302	996510005833	ZENER DIODE 5.1V 1/2W-52
F101	994000004867	FUSE F2AL250V
F101H	996510000682	FUSE HOLDER(PLASTIC)
F102	996510000823	FUSE F6.3AL250V(50F)
F102H	996510000682	FUSE HOLDER(PLASTIC)
F103	996510000823	FUSE F6.3AL250V(50F)
F103H	996510000682	FUSE HOLDER(PLASTIC)
IC1	996510002941	IC TL072 SOP
IC2	996510000010	IC LM7805/LM340T5 7805
IC300	996510000464	CHIP IC TDA8920(PACKING)

**Note: Only these parts mentioned in the list are normal service parts.**

## FACTORY PART LIST

LOCATION NO.	12NC	DESCRIPTION
		MCD906/93 DVD UNIT PARTS ASS'Y
D020		MCD906 BUTTON BOARD ASS'Y
SW208		TACT SWITCH TS-1307-01 6X6X5
SW211		TACT SWITCH TS-1307-01 6X6X5
		26WIRE 150 2.0/5PX2
		PUSH KEY PCB 35-MCD906-01A1
D021		MCD906 DISPLAY BOARD ASS'Y
R206		CARBON FILM RESISTOR 10 1/8W J-52
R211		CARBON FILM RESISTOR 10K 1/8W J-52
R213		CARBON FILM RESISTOR 10K 1/8W J-52
R214		CARBON FILM RESISTOR 33K 1/8W J-52
R215		CARBON FILM RESISTOR 33K 1/8W J-52
R216		CARBON FILM RESISTOR 33K 1/8W J-52
R217		CARBON FILM RESISTOR 33K 1/8W J-52
R01		CARBON FILM RESISTOR 4.7K 1/8W J-52
R212		CARBON FILM RESISTOR 4.7K 1/8W J-52
R209		CARBON FILM RESISTOR 47K 1/8W J-52
R207		CARBON FILM RESISTOR 47 1/8W J-52
R201		CARBON FILM RESISTOR 4.7 1/2W J-52
R202		CARBON FILM RESISTOR 4.7 1/2W J-52
C201		NONINDUCTIVE CAP.104J 100V K
C202		NONINDUCTIVE CAP.104J 100V K
C205		CERAMIC CAP. 104P 50V K-5
C208		CERAMIC CAP. 104P 50V K-5
C203		CERAMIC CAP.103P 50V K-5
C204		CERAMIC CAP.103P 50V K-5
C206		ELECTROLYTIC CAP.47u 16V L-5 5X5
C207		ELECTROLYTIC CAP.47u 16V L-5 5X5
D201		DIODE 4148-52
D202		DIODE 4148-52
D203		DIODE 4148-52
IC201		IC PT6311/SC16311/CD16311
VFD701		NE-906D-1.GR VFD DISPLAY
CORD201		CODER R166ECC-D1-15F-24P-I066
SW201		TACT SWITCH TS-1307-01 6X6X5
SW202		TACT SWITCH TS-1307-01 6X6X5
SW203		TACT SWITCH TS-1307-01 6X6X5
SW204		TACT SWITCH TS-1307-01 6X6X5
SW205		TACT SWITCH TS-1307-01 6X6X5
SW206		TACT SWITCH TS-1307-01 6X6X5
SW207		TACT SWITCH TS-1307-01 6X6X5
SW210		TACT SWITCH TS-1307-01 6X6X5
SW212		TACT SWITCH TS-1307-01 6X6X5
S201		IR SENSOR SMALL BLACK
		28WIRE 250+250 2.0/11PX1 2.0/8P/3P
		VFD DISPLAY PCB 35-MCD906-02A1
JP201-225		JUMPER WIRE $\phi$ 0.6X40mm (375m=1kG)
D022		MCD906 IR BRACKET HIPS
UNDERLAY VFD		BLACK SPONGE 15X10X2.5 40°
D041		MCD906 AMP BOARD ASS'Y
R319		CHIP RESISTOR 10 1/4W J (1206)
R320		CHIP RESISTOR 10 1/4W J (1206)
R342		CARBON FILM RESISTOR 15 1/8W J-52
R171		CHIP RESISTOR 680 1/16W J (0805)
R172		CHIP RESISTOR 680 1/16W J (0805)
R173		CHIP RESISTOR 680 1/16W J (0805)
R174		CHIP RESISTOR 680 1/16W J (0805)
R317		CHIP RESISTOR 10 1/16W J (0805)



## FACTORY PART LIST

R318	CHIP RESISTOR 10 1/16W J (0805)
R1392	CHIP RESISTOR 100 1/16W J (0805)
R340	CHIP RESISTOR 100 1/16W J (0805)
R1389	CHIP RESISTOR 100 1/16W J (0805)
R341	CHIP RESISTOR 100 1/16W J (0805)
R1379	CHIP RESISTOR 1K 1/16W J (0805)
R1378	CHIP RESISTOR 1K 1/16W J (0805)
R1393	CHIP RESISTOR 1K 1/16W J (0805)
R345	CHIP RESISTOR 1K 1/16W J (0805)
R129	CHIP RESISTOR 10K 1/16W J (0805)
R130	CHIP RESISTOR 10K 1/16W J (0805)
R132	CHIP RESISTOR 10K 1/16W J (0805)
R133	CHIP RESISTOR 10K 1/16W J (0805)
R150	CHIP RESISTOR 10K 1/16W J (0805)
R151	CHIP RESISTOR 10K 1/16W J (0805)
R159	CHIP RESISTOR 10K 1/16W J (0805)
R160	CHIP RESISTOR 10K 1/16W J (0805)
R140	CHIP RESISTOR 4.7K 1/16W J (0805)
R083	CHIP RESISTOR 4.7K 1/16W J (0805)
R084	CHIP RESISTOR 4.7K 1/16W J (0805)
R300	CHIP RESISTOR 4.7K 1/16W J (0805)
R343	CHIP RESISTOR 4.7K 1/16W J (0805)
R113	CHIP RESISTOR 47K 1/16W J (0805)
R344	CHIP RESISTOR 47K 1/16W J (0805)
R304	CHIP RESISTOR 5.6K 1/16W J (0805)
R305	CHIP RESISTOR 5.6K 1/16W J (0805)
R306	CHIP RESISTOR 5.6K 1/16W J (0805)
R308	CHIP RESISTOR 5.6K 1/16W J (0805)
R309	CHIP RESISTOR 5.6K 1/16W J (0805)
R335	CHIP RESISTOR 100K 2.2K 1/4W J (1206)
R336	CHIP RESISTOR 100K 2.2K 1/4W J (1206)
R303	CHIP RESISTOR 2.2K 1/16W J (0805)
R082	CHIP RESISTOR 22K 1/16W J (0805)
R314	CHIP RESISTOR 22K 1/16W J (0805)
R315	CHIP RESISTOR 22K 1/16W J (0805)
R310	CHIP RESISTOR 22 1/16W J (0805)
R311	CHIP RESISTOR 22 1W J (2512)
R312	CHIP RESISTOR 22 1W J (2512)
R316	CHIP RESISTOR 30K 1/16W J (0805)
R331	CHIP RESISTOR 15K 1/16W J (0805)
R332	CHIP RESISTOR 15K 1/16W J (0805)
R333	CHIP RESISTOR 240K 1/16W J (0805)
R334	CHIP RESISTOR 240K 1/16W J (0805)
R175	CARBON FILM RESISTOR 560 1/4W J-52
R162	CARBON FILM RESISTOR 2.2 1/4W J-52
R163	CARBON FILM RESISTOR 2.2 1/4W J-52
R313	CHIP RESISTOR 1.5K 1/16W J (0805)
C307	CHIP CAP.474P 50V M (0805) Y5V
C308	CHIP CAP.474P 50V M (0805) Y5V
C339	CHIP CAP.474P 50V M (0805) Y5V
C341	CHIP CAP.474P 50V M (0805) Y5V
C342	CHIP CAP.474P 50V M (0805) Y5V
C344	CHIP CAP.474P 50V M (0805) Y5V
C392	CHIP CAP.224P 50V M (0805) Y5V
C345	CHIP CAP.220P 50V K (0805) X7R
C347	CHIP CAP.220P 50V K (0805) X7R
C353	CHIP CAP.220P 50V K (0805) X7R
C354	CHIP CAP.220P 50V K (0805) X7R
C350	CHIP CAP.220P 50V K (0805) X7R

## FACTORY PART LIST

R100	CHIP RESISTOR 39 1/16W J (0805)
R335	CHIP RESISTOR100K 2.2K 1/4W J (1206)
R336	CHIP RESISTOR100K 2.2K 1/4W J (1206)
C396	ELECTROLYTIC CAP.100u 10V L-5 5X11
C338	ELECTROLYTIC CAP.100u 16V L-5 5X11
C1517	ELECTROLYTIC CAP. 1000u 16V L L10 10X16
C1501	ELECTROLYTIC CAP.3300u 25V L 16X25
C395	ELECTROLYTIC CAP.47u 16V L-5 5X11
C1	ELECTROLYTIC CAP.47u 25V L-5 5X11
C2	ELECTROLYTIC CAP.47u 25V L-5 5X11
C1514	ELECTROLYTIC CAP.47u 25V L-5 5X11
C324	CHIP CAP.102P 50V K (0805) X7R
C326	CHIP CAP.102P 50V K (0805) X7R
C327	CHIP CAP.102P 50V K (0805) X7R
C332	CHIP CAP.102P 50V K (0805) X7R
C329	CHIP CAP.102P 50V K (0805) X7R
C330	CHIP CAP.102P 50V K (0805) X7R
C331	CHIP CAP.102P 50V K (0805) X7R
C333	CHIP CAP.102P 50V K (0805) X7R
C335	CHIP CAP.102P 50V K (0805) X7R
C336	CHIP CAP.102P 50V K (0805) X7R
C1515	CHIP CAP.104P 50V M (0805) Y5V
C397	CHIP CAP.104P 50V M (0805) Y5V
C398	CHIP CAP.104P 50V M (0805) Y5V
C377	CHIP CAP.153P 50V M (0805) Y5V
C379	CHIP CAP.153P 50V M (0805) Y5V
C381	CHIP CAP.153P 50V M (0805) Y5V
C345	CHIP CAP.220P 50V K (0805) X7R
C347	CHIP CAP.220P 50V K (0805) X7R
C348	CHIP CAP.220P 50V K (0805) X7R
C353	CHIP CAP.220P 50V K (0805) X7R
C350	CHIP CAP.220P 50V K (0805) X7R
C354	CHIP CAP.220P 50V K (0805) X7R
C392	CHIP CAP.224P 50V M (0805) Y5V
C303	CHIP CAP.333P 50V M (0805) Y5V
C304	CHIP CAP.333P 50V M (0805) Y5V
C307	CHIP CAP.474P 50V M (0805) Y5V
C308	CHIP CAP.474P 50V M (0805) Y5V
C339	CHIP CAP.474P 50V M (0805) Y5V
C341	CHIP CAP.474P 50V M (0805) Y5V
C342	CHIP CAP.474P 50V M (0805) Y5V
C344	CHIP CAP.474P 50V M (0805) Y5V
C374	NONINDUCTIVE CAP.104J 100V K-5
C376	NONINDUCTIVE CAP.104J 100V K-5
C153	CHIP CAP.104P 100V M (0805) Y5V
C154	CHIP CAP.104P 100V M (0805) Y5V
C155	CHIP CAP.104P 100V M (0805) Y5V
C140	CHIP CAP.104P 100V M (0805) Y5V
C139	CHIP CAP.104P 100V M (0805) Y5V
C301	CHIP CAP.104P 100V M (0805) Y5V
C302	CHIP CAP.104P 100V M (0805) Y5V
C1502	CHIP CAP.104P 100V M (0805) Y5V
C355	CHIP CAP.104P 100V M (0805) Y5V
C356	CHIP CAP.104P 100V M (0805) Y5V
C359	CHIP CAP.104P 100V M (0805) Y5V
C360	CHIP CAP.104P 100V M (0805) Y5V

## FACTORY PART LIST

C361	CHIP CAP.104P 100V M (0805) Y5V
C362	CHIP CAP.104P 100V M (0805) Y5V
C363	CHIP CAP.104P 100V M (0805) Y5V
C364	CHIP CAP.104P 100V M (0805) Y5V
C367	CHIP CAP.104P 100V M (0805) Y5V
C368	CHIP CAP.104P 100V M (0805) Y5V
C370	CHIP CAP.104P 100V M (0805) Y5V
C371	CHIP CAP.104P 100V M (0805) Y5V
C373	CHIP CAP.104P 100V M (0805) Y5V
C134	CHIP CAP.104P 100V M (0805) Y5V
C135	CHIP CAP.104P 100V M (0805) Y5V
C305	CHIP CAP.104P 100V M (0805) Y5V
C306	CHIP CAP.104P 100V M (0805) Y5V
C382	NONINDUCTIVE CAP.684J 100VJ-5
C383	NONINDUCTIVE CAP.684J 100VJ-5
C390	ELECTROLYTIC CAP.1000u 35V L 105°C
C389	ELECTROLYTIC CAP.1000u 35V L 105°C
C387	ELECTROLYTIC CAP.470u 35V L 105°C 10X16
C388	ELECTROLYTIC CAP.470u 35V L 105°C 10X16
C121	ELECTROLYTIC CAP.220U 50V L-5 10X12.5
C122	ELECTROLYTIC CAP.220U 50V L-5 10X12.5
C384	ELECTROLYTIC CAP.22u 100V L 105°C SHQ
C300	ELECTROLYTIC CAP.10u 25V L-5 4X5
C394	ELECTROLYTIC CAP.10u 25V L-5 4X5
C151	ELECTROLYTIC CAP. 4700u 35V L 16X40
C152	ELECTROLYTIC CAP. 4700u 35V L 16X40
C393	ELECTROLYTIC CAP.47u 35V L-5 6.3X7
L300	INDUCTOR 22u(7A)
L301	INDUCTOR 22u(7A)
D081	DIODE 4148-52
D110	DIODE 4148-52
DZ300	ZENER DIODE 5.1V 1/2W-52
DZ302	ZENER DIODE 5.1V 1/2W-52
D102	RECTIFIER DIODE 4001-52
D107	RECTIFIER DIODE 4001-52
D108	RECTIFIER DIODE 4001-52
D109	RECTIFIER DIODE 4001-52
BD100	RECTIFIER DIODE 4001-52
DZ1	ZENER DIODE 12V 0.5W-52
DZ2	ZENER DIODE 12V 0.5W-52
DZ301	ZENER DIODE 27V 1W -52
DZ103	ZENER DIODE 27V 1W -52
DZ103	ZENER DIODE 27V 1W -52
Q115	CHIP TRANSISTOR BC857B(SOT23)
Q116	CHIP TRANSISTOR BC857B(SOT23)
Q081	CHIP TRANSISTOR 8050(SOT-23)
Q104	CHIP TRANSISTOR 8050(SOT-23)
Q300	CHIP TRANSISTOR BC817-25(SOT23)
Q1	CHIP TRANSISTOR 9014 (SOT-23)
Q301	CHIP TRANSISTOR 9014 (SOT-23)
Q117	CHIP TRANSISTOR BC847B(SOT23)
Q2	CHIP TRANSISTOR 8550C(SOT-23)
Q080	CHIP TRANSISTOR 8550C(SOT-23)
Q302	CHIP TRANSISTOR 8550C(SOT-23)
DB102	THYRISTOR RS808
DB101	THYRISTOR RS1010G(10A)

## FACTORY PART LIST

Q113	MOSFET BUK7509-55A
Q114	MOSFET BUK7509-55A
IC2	IC LM7805/LM340T5 7805
IC300	IC TDA8920BTH
IC1	IC TL072 SOP
CN300	SPEAKER SOCKET 4PINS PST-410A/E
CN90	PINS CONNECTOR 2.5/2P
CN109	PINS CONNECTOR 2.5/2P
CN111	PINS CONNECTOR 2.0/2P
CN102	PINS CONNECTOR 2.0/3P
CN110	PINS CONNECTOR 3.96/3P
CN301	PINS CONNECTOR 2.0/4P
CN1	PINS CONNECTOR 2.5/5P
CN108	PINS CONNECTOR 2.0/7P
CN107	PINS CONNECTOR 2.5/7P
F101	? FUSE F2AL250V
F101	? FUSE HOLDER(PLASTIC)
F102	? FUSE HOLDER(PLASTIC)
F103	? FUSE HOLDER(PLASTIC)
F102	? FUSE F5AL250V
F103	? FUSE F5AL250V
L303	FERRITE BEAD JRHW0349 BLUE
L304	FERRITE BEAD JRHW0349 BLUE
	PCB 35-MCD906-03A1 AMP FRONT PANEL
	MICA INSULATION SHEET 15.5X11
Q113	HEAT SINK 21X16X24
Q114	HEAT SINK 21X16X24
D042	HEAT SINK DR-H300 28X30X45
IC7812	SCREW 3X6 PA (PLATING)
	SCREW 3 X 12 BBH (PLATING)
	PLASTIC POLE H=3.5
D035	MCD906 AUX BOARD ASS'Y
R400	CARBON FILM RESISTOR 47K 1/8W J-52
R401	CARBON FILM RESISTOR 47K 1/8W J-52
R406	CARBON FILM RESISTOR 47K 1/8W J-52
R407	CARBON FILM RESISTOR 47K 1/8W J-52
R402	CARBON FILM RESISTOR 100 1/8W J-52
R403	CARBON FILM RESISTOR 100 1/8W J-52
R404	CARBON FILM RESISTOR 100 1/8W J-52
R405	CARBON FILM RESISTOR 100 1/8W J-52
CN401	RCA SOCKET 4P AV4-8.4-7
CN402	PINS CONNECTOR 2.0/6P
	AUX PCB 35-MCD906-04A1
D013	MCD906 VALVE LAMP BOARD ASS'Y(R)
R501	CARBON FILM RESISTOR 680 1/8W J-52
LED501	LED $\Phi$ 3 ORANGE
	LAMP PCB 35-MCD906-05A1
	26 WIRE 150 2.0/4PX1 2.0/2PX2
D012	MCD906 VALVE LAMP BOARD ASS'Y(L)
R601	CARBON FILM RESISTOR 680 1/8W J-52
LED601	LED $\Phi$ 3 ORANGE
	LAMP PCB 35-MCD906-06A1
D007B	MCD906 LAMP BOARD ASS'Y
R701	CARBON FILM RESISTOR 680 1/8W J-52
R702	CARBON FILM RESISTOR 680 1/8W J-52
LED701	LED $\Phi$ 3 3B4SCB01 (HIGH-BLUE)

## FACTORY PARTS LIST

LED702	LED $\Phi$ 3 3B4SCB01 (HIGH-BLUE) LAMP PCB 35-MCD906-07A1 26WIRE 120 2.0/2PX1 2.0/2PX1
D026	MCD906 HEADPHONE BOARD ASS'Y
JACK801	6.35 JACK $\Phi$ 6.35 CK-6.35-6 26 WIRE 180 2.0/4PX1 2.0/4PX1 HEADPHONE PCB 35-MCD906-08A1
D033	MCM906/12 ECO POWER CONTROL BOARD ASS'Y
CN6	PINS CONNECTOR 2.0/2P
CN110	PINS CONNECTOR 3.96/3P
REL110	RELAY 10A 240VAC-30VDC HLS-14F1L-DC12V-C ECO POWER PCB 35-MCD906-09A1
D018	MCM906 PREPOSITIVE BOARD ASS'Y
R50	CARBON FILM RESISTOR 0.47 1/2W J
R2	CARBON FILM RESISTOR 0.47 1/2W J
R22	CARBON FILM RESISTOR 0.47 1/2W J
R37	CARBON FILM RESISTOR 100 1/8W J-52
R7	CARBON FILM RESISTOR 1K 1/8W J-52
R31	CARBON FILM RESISTOR 1K 1/8W J-52
R6	CARBON FILM RESISTOR 10K 1/8W J-52
R66	CARBON FILM RESISTOR 3.3K 1/8W J-52
R68	CARBON FILM RESISTOR 3.3K 1/8W J-52
R51	CARBON FILM RESISTOR 47K 1/8W J-52
R52	CARBON FILM RESISTOR 47K 1/8W J-52
R67	CARBON FILM RESISTOR 47K 1/8W J-52
R69	CARBON FILM RESISTOR 47K 1/8W J-52
R1	CARBON FILM RESISTOR 470K 1/8W J-52
R62	CARBON FILM RESISTOR 560 1/2W J -52
R63	CARBON FILM RESISTOR 560 1/2W J -52
R61	CARBON FILM RESISTOR 150K 1/2W J-52
R60	CARBON FILM RESISTOR 150K 1/2W J-52
R24	CARBON FILM RESISTOR 47K 1/2W J-52
R27	CARBON FILM RESISTOR 47K 1/2W J-52
R57	CARBON FILM RESISTOR 3.3K 1/2W J-52
R56	CARBON FILM RESISTOR 3.3K 1/2W J-52
R58	CARBON FILM RESISTOR 330K 1/2W J-52
R59	CARBON FILM RESISTOR 330K 1/2W J-52
R64	CARBON FILM RESISTOR 330K 1/2W J-52
R65	CARBON FILM RESISTOR 330K 1/2W J-52
R54	CARBON FILM RESISTOR 8.2K 1/8W J-52
R55	CARBON FILM RESISTOR 8.2K 1/8W J-52
R23	CARBON FILM RESISTOR 10K 1/2W J-52
R25	CARBON FILM RESISTOR 47K 1/4W J-52
R28	CARBON FILM RESISTOR 47K 1/4W J-52
C11	CHIP CERAMIC CAP.5P 50V $\pm$ 0.5p -5
C10	CHIP CERAMIC CAP.5P 50V $\pm$ 0.5p -5
C3	CHIP CERAMIC CAP.104P 50V K-5
C2	ELECTROLYTIC CAP.2200u 25V L
C1	ELECTROLYTIC CAP. 330u 16V L-5 8X11.5
C6	ELECTROLYTIC CAP.100U 350V M 18X30/31.5
C9	ELECTROLYTIC CAP.100U 350V M 18X30/31.5
C15	ELECTROLYTIC CAP.1U 450V L-5 8-10X12.5
C14	ELECTROLYTIC CAP.1U 450V L-5 8-10X12.5
C5	HIGH VOLTAGE CHIP CERAMIC CAP.223P 1000
C12	MYLAR CAP.104P 280V J
C13	MYLAR CAP.104P 280V J

## FACTORY PARTS LIST

C16	MET. POLYESTER FILM CAP. 1u 250V J CBB22
C17	MET. POLYESTER FILM CAP. 1u 250V J CBB22
D1	DIODE 4148-52
D2	RECTIFIER DIODE 4001-52
D3	RECTIFIER DIODE 4001-52
D7	RECTIFIER DIODE 4007-52
D8	RECTIFIER DIODE 4007-52
D9	RECTIFIER DIODE 4007-52
D10	RECTIFIER DIODE 4007-52
Q6	TRANSISTOR 2SB772A
Q3	TRANSISTOR 9014D-5( $\beta > 500$ )
Q4	TRANSISTOR 9014D-5( $\beta > 500$ )
Q1	VACUUM TUBE 12AX7
Q2	VACUUM TUBE 12AX7
U1	IC 7812 (ST)
CN5	USB JACK A-TYPE 4P FEMALE 90 DIP TYPE
Q1	VACUUM TUBE SOCKET GZC9-B(PCB)
Q2	VACUUM TUBE SOCKET GZC9-B(PCB)
CN3	PINS CONNECTOR 2.5/5P
CN7	PINS CONNECTOR 2.0/2P
CN8	PINS CONNECTOR 2.0/2P
CN1	PINS CONNECTOR 2.0/4P
	26WIRE+28SHIELDING 330 2.0/5P 2.0/5P
	26WIRE+28SHIELDING 330 2.0/7P 2.0/7P
	PREPOSITIVE PCB 35-MCD906-10A1
R8	JUMPER WIRE $\Phi 0.6 \times 40$ mm (375m=1kG)
JP1	JUMPER WIRE $\Phi 0.6 \times 40$ mm (375m=1kG)
JP2	JUMPER WIRE $\Phi 0.6 \times 40$ mm (375m=1kG)
	HEAT SINK 21X16X33
	MCD906 VACUUM TUBE BRACKET
D022	MCD906 VACUUM TUBE BACK PANEL(ABS)
	SCREW 3 X 6 BTH(PLATING)
	SCREW 3 X 5 BMTT (PLATING)
	SCREW 3 X 5 FMTT (PLATING)
D034	MCM770/772/906 M-BOY BOARD ASS'Y
CN1	26 WIRE 120 2.0/4PX1
J1	SOCKET ST—3541 4P BLACK
	PCB 35-MCD770-08A1 M-BOY 30X28
	NE1503PCB METAL BRACKET 13X13X8X1
	SCREW 3 X 5 PMTT (PLATING)
D045	ASA WXD-8210D CD MECHANISM
D045B	CD MECHANISM (SANYO DA11VZ)
D045A	CD MECHANISM BRACKET ASA WXD-8210D
D039	MCM906/12 DECODER+MCU PARTS ASS'Y
	CPU U252(S3C9228 XYZ-CAN CHANGE)
	CD DECODER EJS906CD
	IC P74LVC2GU04GW SOT-363(TW)
	IC TEA5766UK
	MCM906/12 DECODER+MCU SOFTWARE
	MCM906/12 CPU SOFTWARE
	MCM906/12 CD MP3 SOFTWARE
D007	MCD906 FRONT CABINET PARTS
D007E	MCD906 USB DOOR SPRING ( $\Phi 0.4$ STEEL WIRE)
D007D	MCD906 DVD PLASTIC FRONT CABINET
D007C	MCD906 OPEN/CLOSE BUTTON ABS718
D007A	MCD906 SOURCE BUTTON ABS718

## FACTORY PARTS LIST

D007F	MCD906 FUNCTION BUTTON(ABS PLATE)
D008	MCD906 POWER BUTTON PARTS
D008A	MCD906 POWER BUTTON(ABS PLATE)
D008B	MCD906 POWER BUTTON BRACKET(ABS)
D047	MCD906 DVD DOOR PARTS
D047A	MCD906 DVD DOOR ABS718
D047B	SCUTCHEON(PHILIPS 31X5.68)
D010	MCD906 VOLUME KNOB PARTS(SILVER)
D010A	MCD906 VOLUME KNOB COVER
D010B	MCD906 VOL KNOB CORE(HIPS)
CASING	MCM906/12 CD+MP3 CASING PARTS ASS'Y
	MCD988 USB PCB PRESS-PIECE
D027	METAL PLATE 11X7X1 Φ3
D037	MCD906 DVD BACK METAL PLATE
D002	MCD906 DVD TOP COVER(ALUMINIUM)
D046	MCD906 TOP LENS BRACKET
D043	MCD906 AMP BOARD BRACKET(METAL)
D001	MCD906 TOP LENS ABS718
D009	MCD906 USB DOOR(HIPS)
D044	MCD906 DVD MECHANISM BRACKET(HIPS)
D048	MCD906 DVD MACHINE FOOT(HIPS)
D003	MCD906 PLASTIC SIDE PLATE(L) ABS716
D040	MCD906 PLASTIC SIDE PLATE(R) ABS716
D005	MCD906 LIGHT GUIDE(L)(PMMA)
D006	MCD906 LIGHT GUIDE(R)(PMMA)
D004	MCD906 DISPLAY LENS PMMA
	SCREW 3 X 6 BM (PLATING)
	SCREW 3 X 4 BMTT (PLATING)
	SCREW 3 X 12 BA (PLATING)
	SCREW 3 X 6 BA (PLATING)
	SCREW 3 X 5 BMTT (PLATING)
	SCREW 3 X 14 PM(BLACK)
	M3 NUT (PLATING)
	SCREW 3 X 8 PM(BLACK)
	SCREW 3 X 10 PA(BLACK)
	SCREW 3 X 8 BA (PLATING)
	SCREW 2.6 X 4 BB (PLATING)
	SCREW 3 X 6 FMTT Φ6 (PLATING)
	SCREW 2.6X6 BB (PLATING)
	SCREW 3 X 6 BMTT (PLATING)
	SCREW 3 X 5 PMTT(BLACK)
	BLACK SPONGE 10X10X8 75°
	WHITE SPONGE 47X10X2 40°
D049	MCD770 RUBBER FOOT(Φ12X1.5 BLACK)
	CABLE TIE 70
D032	TRANSFORMER ECO-228A-12 230V/50 CE
D028	TRANSFORMER 906D-12 230V/50 VDE
D031	AC SOCKET 2.5A/250V(2120-FSI)
1A	FLAT FLEXIBLE CABLE 16PX250X1.00XA
	26WIRE 250 2.0/6PX2
	28WIRE 250 2.0/5PX2
	28SHIELDING 150 2.0/7PX1 2.0/6P
	22 SINGLE WIRE 100 2.5/5PX2
	26WIRE+28SHIELDING 120 2.0/5P 2.0/4P
	26 WIRE 150 2.0/2PX2
	FERRITE RING JTH29X19X15

## FACTORY PARTS LIST

D036	MINI FAN(RDM4010S DC12V/0.07A)
2A	MCM906/12 SPEAKER BOX ASS'Y(L)
	MCD906 FREQUENCY DIVIDER ASS'Y
L2	HOLLOW INDUCTOR 0.3mH
L1	SILICON INDUCTOR 0.78mH F41780
R2	CEMENT RESISTOR 3.3 10W J
R1	CEMENT RESISTOR 4.7 5W J
C2	NON-POLARITG ELEC.CAP.5.6u 100V M SNP
C1	NON-POLARITG ELEC.CAP.8.2U 100V M SNP
	FREQUENCY DIVIDER PCB 35-MCD906-16A1
	CABLE TIE 150
	22 SINGLE WIRE 150 BLACK
	22 SINGLE WIRE 150 RED
	22 SINGLE WIRE 250 YELLOW
	22 SINGLE WIRE 250 BLUE
	22 SINGLE WIRE 350 BLACK
	22 SINGLE WIRE 350 RED
	MCM906/12 SPEAEKR BOX ASS'Y(L)
	SPEAKER SOCKET(DJ-028D 92X80 R/B GILD)
	ANTIMAGNETIC WOOFER SPEAKER 5 1/4"4Q75W
	TWEETER $\phi$ 25
	MCD906 WOODEN SPEAKER BOX 186X300X210
	MCD908 GRILL FIXER $\phi$ 4X14
	MCD906 TWEETER LOOP(ALUMINIUM)
	MCD906 WOOFER LOOP(ALUMINIUM)
	PORT TUBE(DJ-213 $\phi$ 71X52X48 PLASTIC)
	SCREW 4 X 16 BA(BLACK)
	SCREW 3 X 12 BA(BLACK)
	SOCKET HEAD SCREW 3X12 HA (PLATING)
	SCREW 3 X 10 FAH NICKEL
	PLASTIC BAG(PE) 58X45cm
	PAPER TUBE( $\phi$ 57.5X $\phi$ 52.5X110)
	RUBBER FOOT( $\phi$ 12X8X7 BLACK)
	MCM906/12 SPEAKER BLACK LABEL 34X20
	STENCIL PAPER 95X65CM
	BLACK GAUZE 100X100
	MCD906/93 SPEAKER BOX GIRLLE PARTS
	PLASTIC FIXER $\phi$ 11X8 BLACK
	SCUTCHEON(PHILIPS 32X6.4)
	MCD906 SPEAKER BOX GRILLE ABS+GF10
2B	MCM906/12 SPEAKER BOX ASS'Y(R)
	MCD906 FREQUENCY DIVIDER ASS'Y
L2	HOLLOW INDUCTOR 0.3mH
L1	SILICON INDUCTOR 0.78mH F41780
R2	CEMENT RESISTOR 3.3 10W J
R1	CEMENT RESISTOR 4.7 5W J
C2	NON-POLARITG ELEC.CAP.5.6u 100V M SNP
C1	NON-POLARITG ELEC.CAP.8.2U 100V M SNP
	FREQUENCY DIVIDER PCB 35-MCD906-16A1
	CABLE TIE 150
	22 SINGLE WIRE 150 BLACK
	22 SINGLE WIRE 150 RED
	22 SINGLE WIRE 250 YELLOW
	22 SINGLE WIRE 250 BLUE
	22 SINGLE WIRE 350 BLACK
	22 SINGLE WIRE 350 RED



## FACTROY PARTS LIST

**MCM906/12 SPEAKER BOX ASS'Y(R)**

SPEAKER SOCKET(DJ-028D 92X80 R/B GILD)  
 ANTIMAGNETIC WOOFER SPEAKER 5 1/4"4Ω75W  
 TWEETER Φ25  
 MCD906 WOODEN SPEAKER BOX 186X300X210  
 MCD908 GRILL FIXER Φ4X14  
 MCD906 TWEETER LOOP(ALUMINIUM)  
 MCD906 WOOFER LOOP(ALUMINIUM)  
 PORT TUBE(DJ-213 Φ71X52X48 PLASTIC)  
 SCREW 4 X 16 BA(BLACK)  
 SCREW 3 X 12 BA(BLACK)  
 SOCKET HEAD SCREW 3X12 HA (PLATING)  
 SCREW 3 X 10 FAH NICKEL  
 PLASTIC BAG(PE) 58X45cm  
 PAPER TUBE(Φ57.5XΦ52.5X110)  
 RUBBER FOOT(Φ12X8X7 BLACK)  
 MCM906/12 SPEAKER BLACK LABEL 34X20  
 STENCIL PAPER 95X65CM  
 BLACK GAUZE 100X100

**MCD906/93 SPEAKER BOX GIRLLE PARTS**

PLASTIC FIXER Φ11X8 BLACK  
 SCUTCHEON(PHILIPS 32X6.4)  
 MCD906 SPEAKER BOX GRILLE ABS+GF10

2

**MCM906/12 ACCESSORY PARTS ASS'Y**

MCM906/12 QUICK START GUIDE ENG./FRE  
 MCM906/12 QUICK START GUIDE  
 MCM906/12 QUICK START GUIDE  
 MCM906/12 INSTRUCTION MANUAL -A  
 MCM906/12 INSTRUCTION MANUAL -B  
 RCA JACK FM SINGLE WIRE 1.5m  
 POWER CORD 1.8m VDE  
 SPEAKER WIRE 3m 65P/0.01  
 AAA BATTERY 1.5V PHILIPS  
 RC2144101/01 REMOTE CONTROL MCM906

2C

2D

2F

3

3A

**MCM906/12 PACKING PARTS ASS'Y**

MCM906/12 GIFT BOX  
 ACCESSORY PRESENT BOX 250X250X50  
 PEARL COTTON BAG 50X45cm  
 POLYFOAM MCD906  
 PASSED LABEL Φ13  
 MCM906/12 SPECIAL LABEL 52X34  
 LASER WARNING LABEL PH Φ15 BLACK  
 MCM906/12 DVD UNIT MAIN LABEL 59.5X39.5  
 MCM906/12 GIFT BOX LABEL 91X111  
 MCM906/12 POS BILLBOARD  
 PLASTIC BAG(PE) 26X17cm PHILIPS  
 PLASTIC BAG(PE) 26X17cm PHILIPS